

SoundJet R1

Quick Start Guide

Schnellanleitung | Guide de démarrage rapide | Guida Rapida all'uso | Guía de inicio rápido | クイックスタートガイド

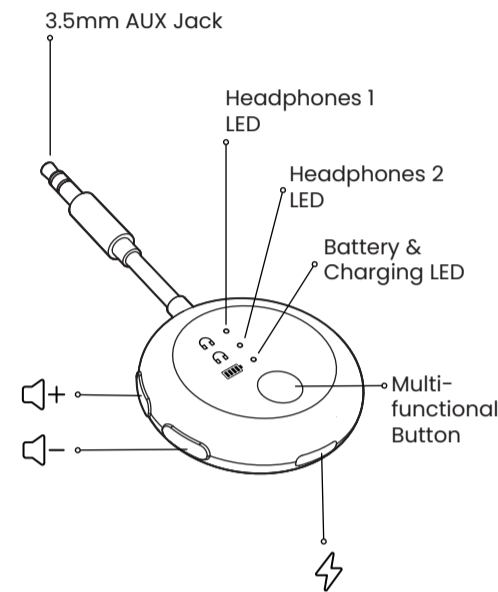


Video Guide,
User Manual, FAQs



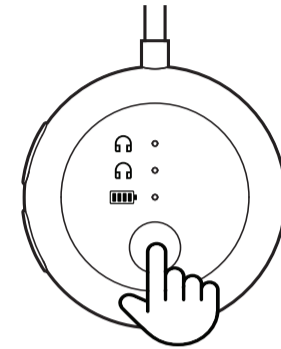
Button Functions

Tastenfunktionen | Fonctions des Boutons
Funzione dei Tasti | Función de las Teclas
ボタンの機能



Multifunction Button

Multifunktions-taste | Bouton Multifonction
Pulsante Multifunzione | Botón Multifunción
多機能ボタン

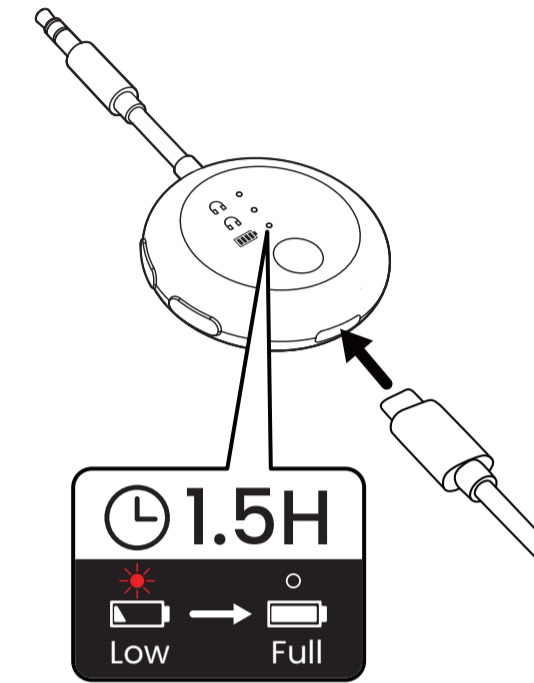


Icon	Function	LED
	On	
	Pairing	
	Off	

Charging

Aufladen | Charge | Ricarica | Cargat | 充電

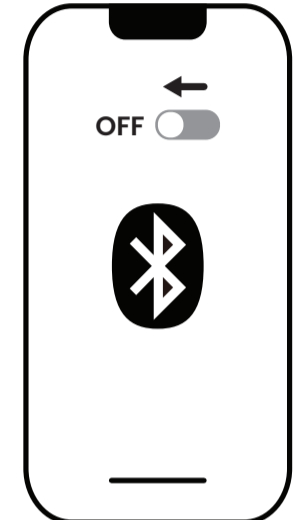
Input: 5V \pm 0.5-2A



How to Pair

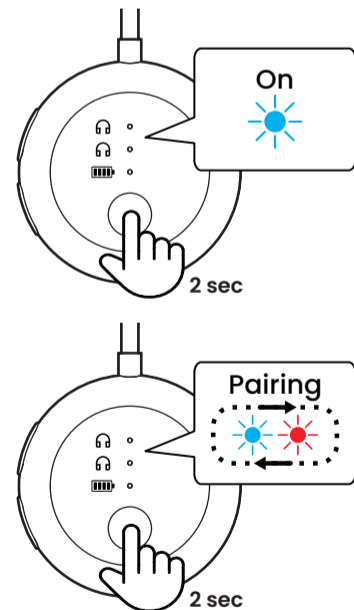
Wie man koppelt | Comment jumeler | Come accoppiare | Cómo emparejar | ペアリング方法

- Turn Phone's Bluetooth Off**
Schalten Sie das Bluetooth des Telefons aus | Désactivez le Bluetooth du téléphone | Disattiva il Bluetooth del telefono | Apague el Bluetooth del teléfono | 携帯電話のBluetoothをオフにする



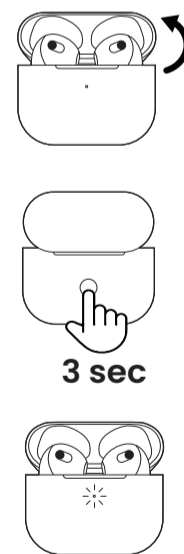
2 Turn SoundJet R1 On & Into Pairing Mode

Schalten Sie den SoundJet R1 ein und in den Kopplungsmodus | Allumez SoundJet R1 et en mode d'appariage | Accendi SoundJet R1 e attiva la modalità di associazione | Encienda SoundJet R1 y entre en modo de emparejamiento | SoundJet R1をオンにしてペアリングモードにします



3 Put Headphones Into Pairing Mode

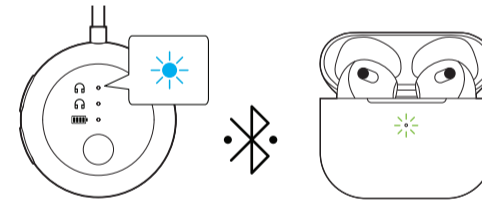
Versetzen Sie die Kopfhörer in den Pairing-Modus | Mettez les écouteurs en mode de couplage | Metti le cuffie in modalità di accoppiamento | Ponga los auriculares en modo de emparejamiento | ヘッドフォンをペアリングモードにします



Note: Pairing methods vary by brand. Check your manual.

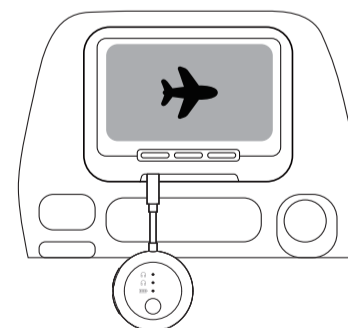
4 Wait for Connection

In Verbindung gebracht | Connecté | Collegato | Conectado | 接続済み



5 Plug Into Audio Source

An Audiogeräte anschließen | Se connecter aux appareils audio | Connettiti ai dispositivi audio | Conectarse a dispositivos de audio | オーディオデバイスに



Please contact us if you need a dual 3.5mm adapter.

Contact Us

Kontaktieren Sie uns | Contactez-nous | Contattaci | Contáctenos | お問い合わせ

avantree.com/submit-a-ticket

support@avantree.com

US	+1 800 232 2078	9am-6pm PST	Mon-Fri
CA	+1 800 232 2078	9am-6pm PST	Mon-Fri
UK	+44 208 068 2023	9am-6pm GMT	Mon-Sat
DE	+49 322 2109 7297	11am-9pm CET	Mon-Sat
FR	+33 17 634 0312	11am-9pm CET	Mon-Sat
IT	+39 069 4803 330	9am-6pm CET	Mon-Sat
ES	+34 93 1786 261	9am-6pm CET	Mon-Sat
AU	+61 2 8310 9897	11am-7pm AEST	Mon-Fri

avantree.com/support/soundjet-r1

See QR code on the product to register.



EU Importer and Responsible Person:
Avantree Europe Z O.O.
Ul. zOlnierzy i Dywizji Wojska
Polskiego 78a/2 84-230 Rumia
Pomorskie, Poland
+48 22 307 25 37
support-eu@avantree.com

US Importer:
Avantree Corporation
San Jose, California
95119 USA
+1 800 232 2078
support@avantree.com

Manufacturer:
Avantronics Limited
Luohu District, Shenzhen 518000
China
+86 755 8228 5022
support@avantronics.com

Battery Manufacturer and Responsible Person:
CHONGQING VDL ELECTRONICS
CO., LTD.
Building 1-4, Puli Industrial New
Area, Zhaojia Street, Kaizhou,
Chongqing, China
86 (0) 23-52862502
customers@gdvd.com



Model No.: BTTC-219
FCC ID: WJ5-BTTC-219
IC: 8475A-318
Made in China

Z-PKQG-219-V3