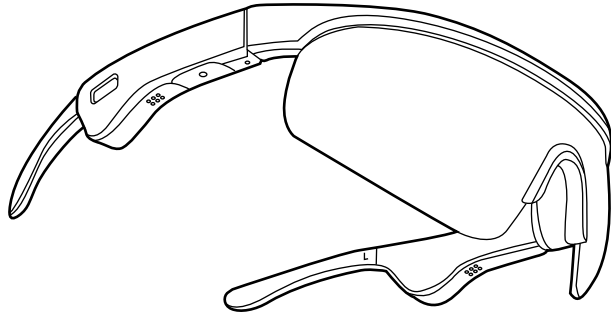


Avantree® SG188  
**Wireless Audio  
Sunglasses**

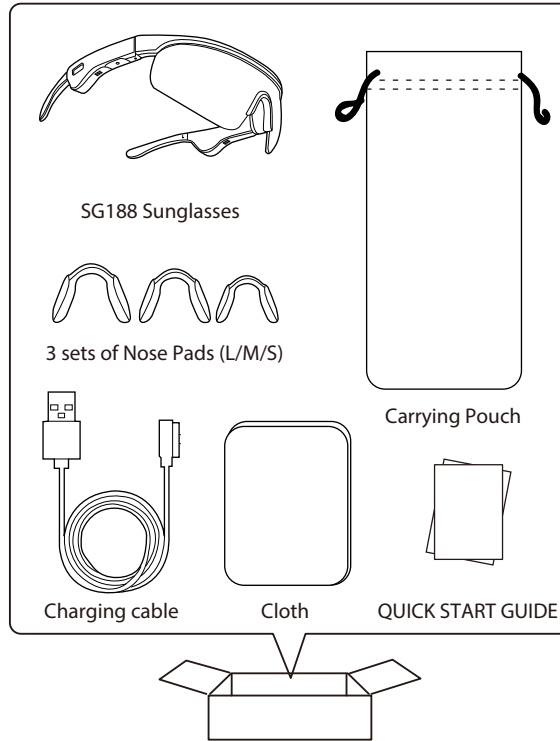
Model No.: BTSG-188

Quick Start Guide  
Schnellanleitung  
Guide de démarrage rapide  
Guida Rapida all'uso  
Guía de iniciorápido

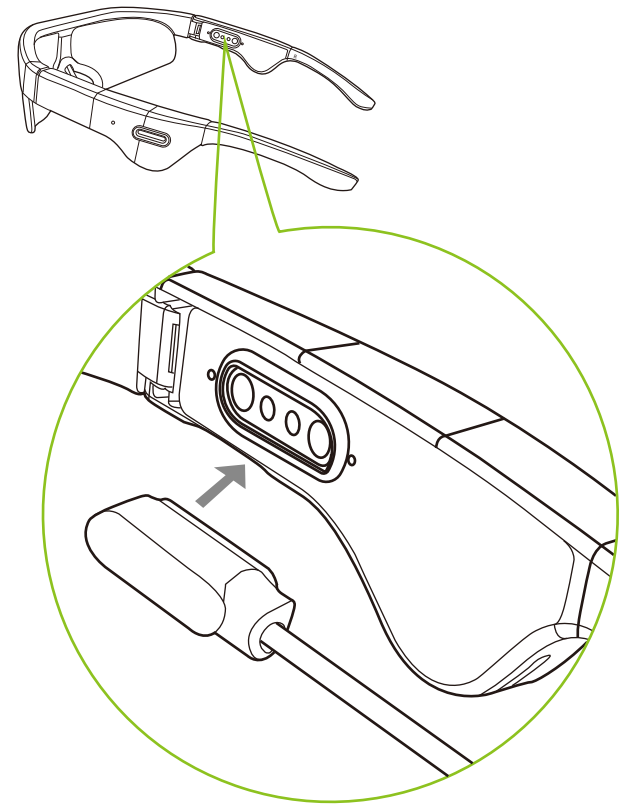


Please visit  
<https://avantree.com/product-support/sg188>  
for detailed step-by-step setup guide

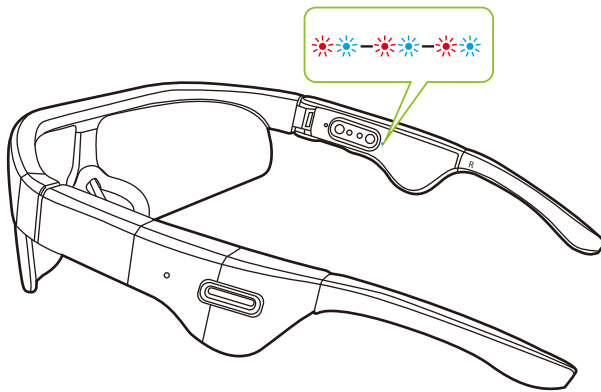
**Box Content** | Inhalt | Contenu de la boîte | Contenuto della confezione | Contenido



**Charging** | Aufladen | Charge | Ricarica | Carga



**1**



**Opening the sunglasses frames will enter pairing mode automatically, the LED will flash Blue & RED.**

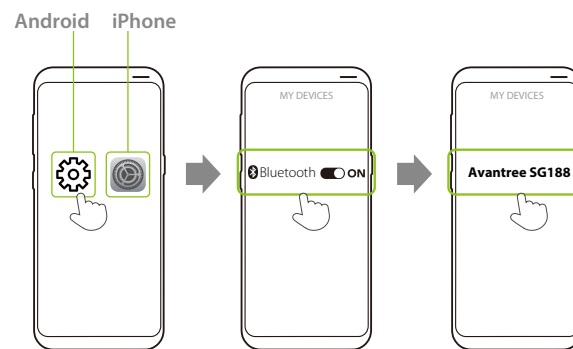
DE: Beim Öffnen des Sonnenbrillenrahmens wird automatisch der Pairing-Modus aktiviert, die LED blinkt blau und ROT.

FR: L'ouverture des lunettes de soleil active automatiquement le mode d'appariement, la LED clignotera en Bleu & Rouge.

IT: All'apertura della montatura degli occhiali da sole entrerà automaticamente in modalità di abbinamento, il LED lampeggerà blu e rosso.

ES: Al abrir las monturas de las gafas de sol entrará en modo de emparejamiento automáticamente, el LED parpadeará Azul & ROJO.

**2**



**Turn on Bluetooth for your smartphone & connect to the SG188.**

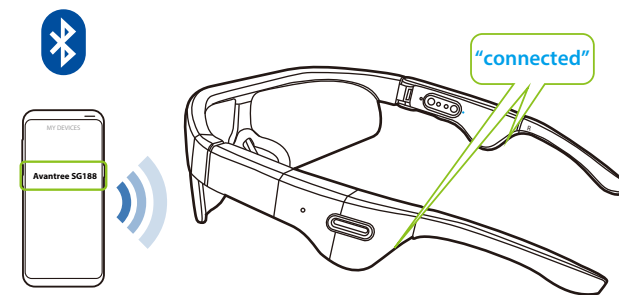
DE: Schalten Sie Bluetooth an Ihrem Smartphone ein und verbinden Sie sich mit dem SG188.

FR: Activez le Bluetooth de votre smartphone et connectez-vous au SG188.

IT: Attivai Bluetooth per il tuo smartphone e connettiti a l' SG188

ES: Active Bluetooth para su teléfono inteligente y conéctese al SG188.

**3**



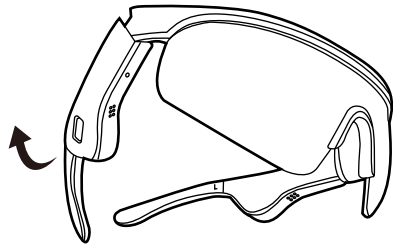
**SG188 will say "connected" once paired successfully.**

DE: SG188 wird "connected" sagen, sobald es gekoppelt wurde.

FR: Le SG188 prononcera "connected" une fois jumelé avec succès.

IT: Una volta collegati l' SG188 dirà "connected"

ES: El SG188 dirá "connected" una vez que se empareje con éxito.



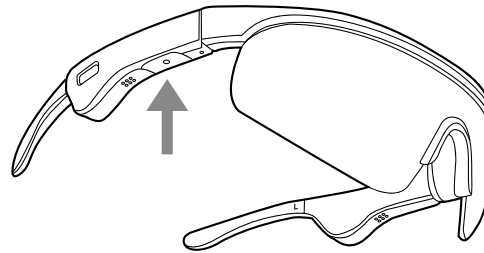
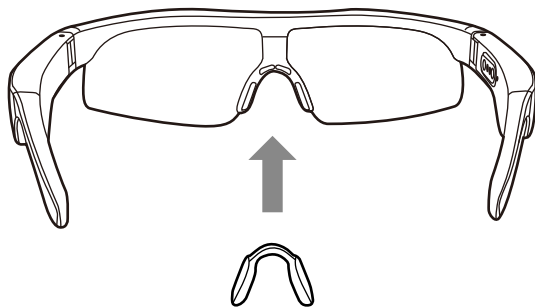
**To power ON/OFF, open or close the sunglasses frames.**

DE: Um es Ein/Auszuschalten, öffnen oder schließen sie den Sonnenbrillenrahmen.

FR: Pour l'allumage/extinction, ouvrez ou fermez les lunettes de soleil.

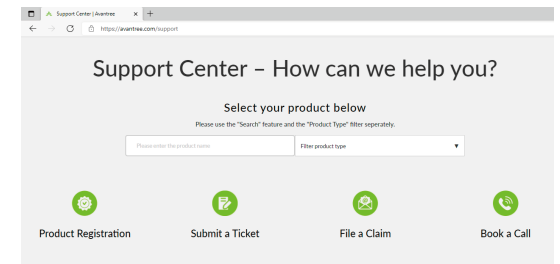
IT: Per accendere/spegnere, aprire o chiudere la montatura degli occhiali da sole.

ES: Para encender/apagar, abra o cierre las monturas de las gafas de sol.



	x 1
	x 3
	x 2
	x 1
	2s

**Online Support** | Online Support | Support en ligne | Supporto Online | Soporte en línea



## Troubleshooting & FAQ

1. How to use the SG188 with my smartphone?
  2. SG188 Function Table & LED Indicators
- .....More FAQ and User tips are available online.

DE:

1. Wie verwende ich das SG188 mit meinem Smartphone?
  2. SG188 Funktionstabelle & LED-Anzeigen
- .....Weitere FAQ und Benutzertipps sind online verfügbar.

FR:

1. Comment utiliser le SG188 avec mon smartphone ?
  2. Tableau des fonctions du SG188 et indicateurs LED
- .....Plus de FAQ et de conseils d'utilisation sont disponibles en ligne.

IT:

1. Come usare l' SG188 con il mio Smartphone?
  2. Funzioni e Indicatori LED dell' SG188
- .....Altre FAQ e suggerimenti per l'utente sono disponibili online.

ES:

1. ¿Cómo usar el SG188 con mi teléfono inteligente?
  2. Tabla de funciones SG188 e indicadores LED
- ..... Más preguntas frecuentes y consejos de usuario están disponibles en línea.

**Contact Us** | Kontaktieren Sie uns | Contactez-nous | Contattaci | Contáctenos



[avantree.com/submit-a-ticket](https://avantree.com/submit-a-ticket)



[support@avantree.com](mailto:support@avantree.com)



USA / Canada: +1800 232 2078  
(US Toll Free, 9am-6pm PST, Mon-Fri)

UK: +44 20 8068 2023  
(9am-6pm, GMT, Mon-Sat)

DE: +49 32221097297  
(11am-9pm, CET, Mon-Sat)

FR: + 33 176340312  
(11am-9pm, CET, Mon-Sat)

IT: +39 06 9480 3330  
(9am-6pm, CET, Mon-Sat)

ES: + 34 931786261  
(9am-6pm, CET, Mon-Sat)

AU: + 61 2 8310 9897  
(11am-7pm, Sydney Time, Mon-Fri)

**Accessories** | Accessories | Accessoires | Accessori | Accesorios

**AUX 3.5mm to RCA Adapter**  
Model Number - Z-NOSE-SG188-V0



**3.5mm Extension Cable**  
Model Number - Z-CGTR-SG188-BLK



**Avantree SG188 Carrying Pouch**  
Model Number - Z-HPPK-SG188-V0



Register for your extended 24 Months warranty at  
[avantree.com/product-registration](https://avantree.com/product-registration)