

HT5006

Quick Start Guide | Schnellanleitung | Guide de démarrage rapide
Guida Rapida all'uso | Guía de inicio rápido

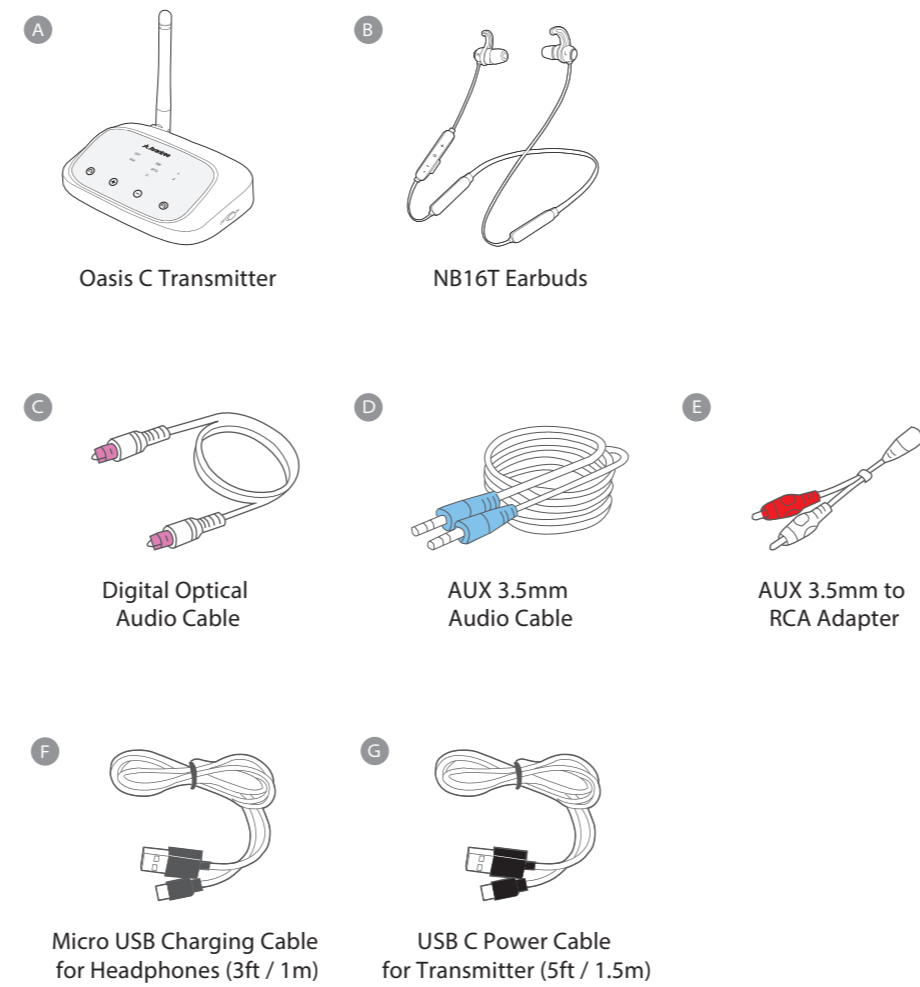


Avantree

Model No.: 8THT-HT5006

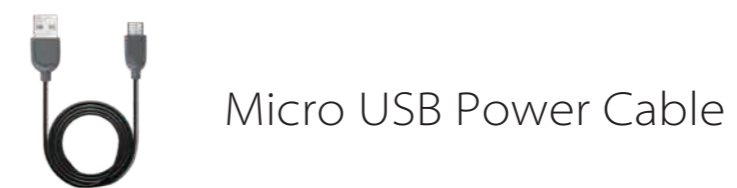
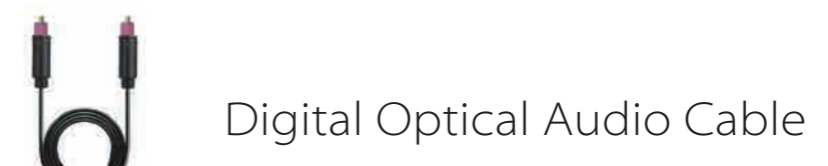
Box Contents

Inhalt | Contenu de la boîte | Contenuto della confezione | Contenido



Optional Accessories

Optionales Zubehör | Accessoires optionnels | Accessori opzionali | Accesorios opcionales



Visit avantree.com/ht5006/accessories for more details

Contact Us

Kontaktieren Sie uns | Contactez-nous | Contattaci | Contáctenos

Support Tickets avantree.com/submit-a-ticket

Support Email support@avantree.com

US/CA +1 800 232 2078 (9am-6pm, PST, Mon-Fri)
UK +44 20 8068 2023 (9am-6pm, GMT, Mon-Sat)
DE +49 32221097297 (11am-9pm, CET, Mon-Sat)
FR +33 176340312 (11am-9pm, CET, Mon-Sat)
IT +39 06 9480 3330 (9am-6pm, CET, Mon-Sat)
ES +34 931786261 (9am-6pm, CET, Mon-Sat)
AU +61 2 8310 9897 (11am-7pm, AEST, Mon-Fri)

Video Guide avantree.com/ht5006/video

FAQ avantree.com/support/ht5006

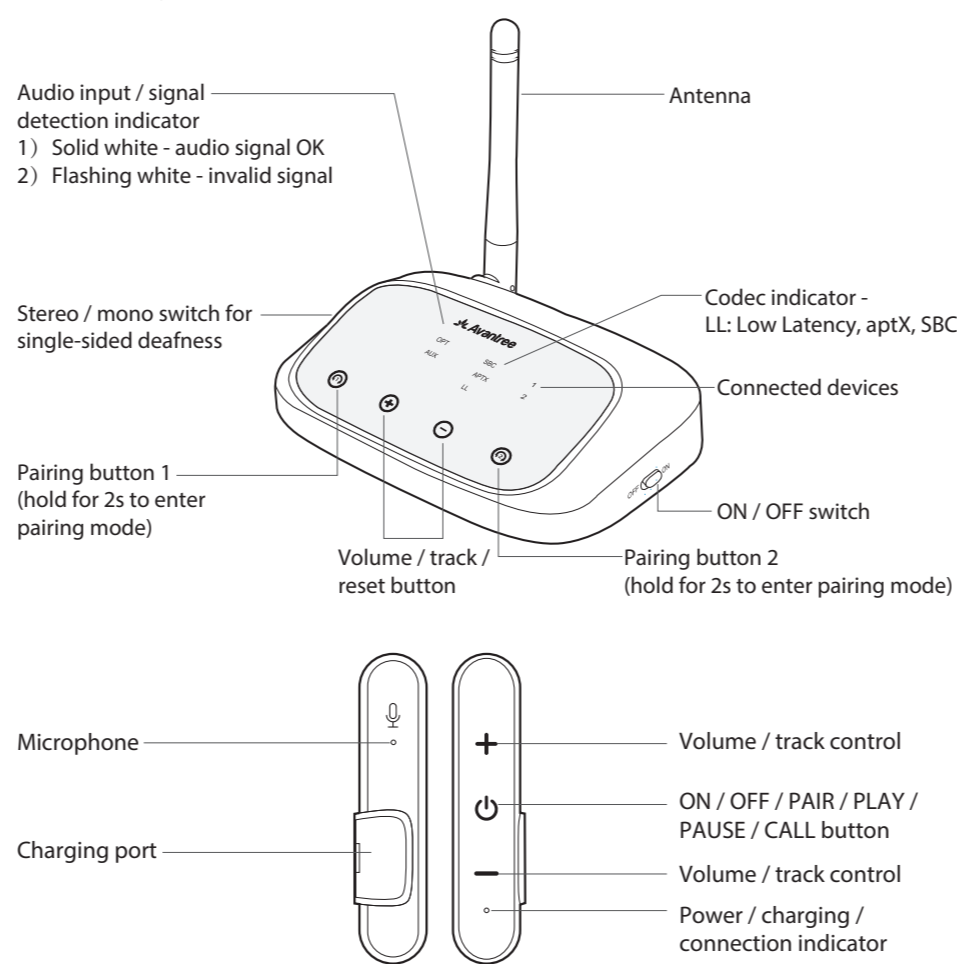
Product Registration avantree.com/product-registration



Dispose of the packaging and this product in accordance with the latest provisions.
Z-PROG-HT5006-V0

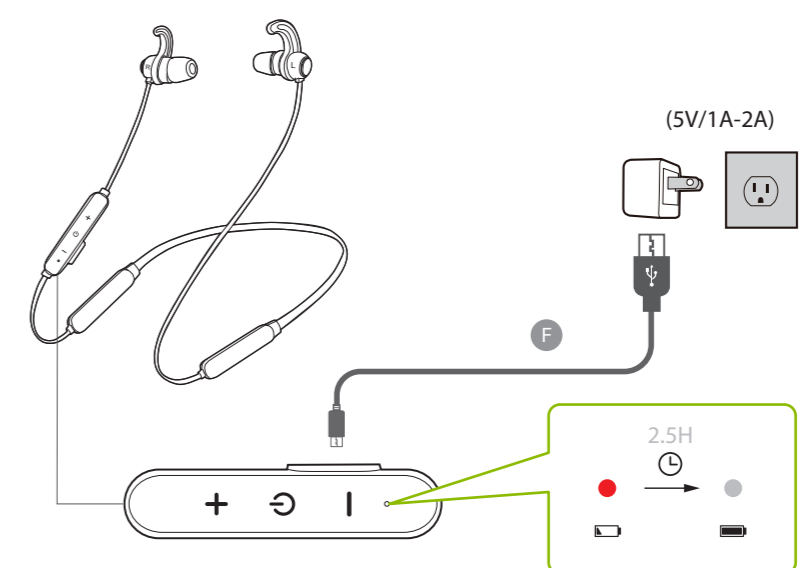
Product Overview

Produktübersicht | Vue d'ensemble du produit | Panoramica Prodotto | Descripción general del producto



Charging

Aufladen | Mise en charge | Carica | Cargando

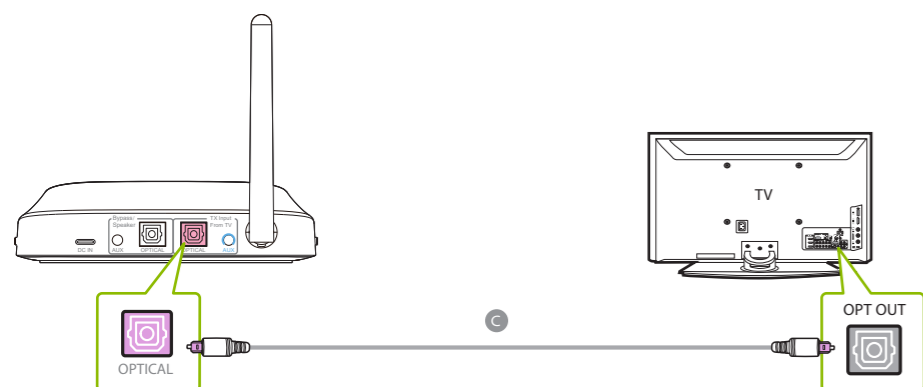


Still need help?
Visit avantree.com/ht5006/charge for more details.

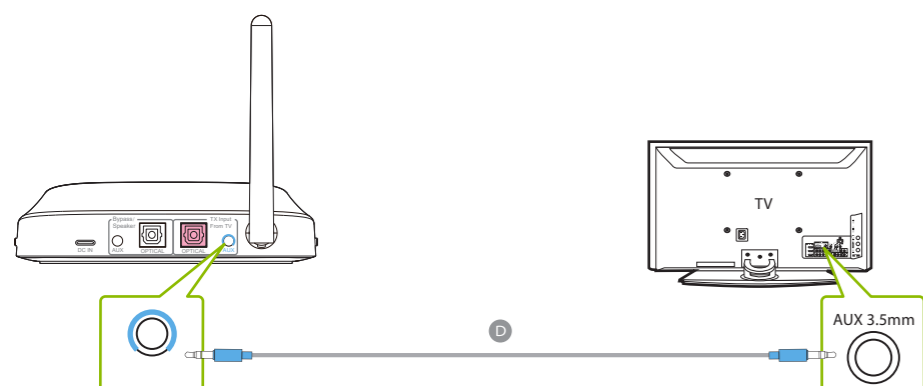
1 Connecting to TV

Verbindung mit dem Fernseher | Connexion au téléviseur | Collegamento alla TV | Conexión al televisor

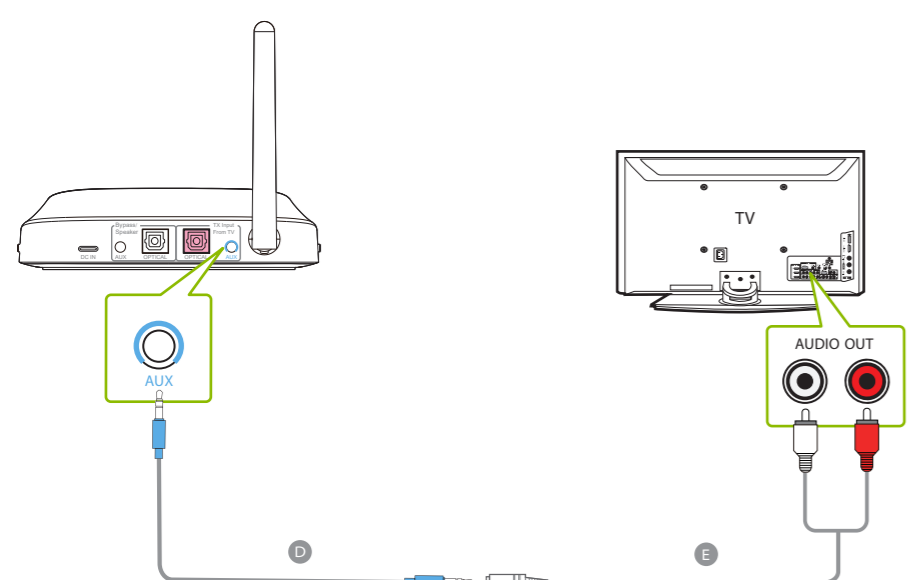
For TVs with OPTICAL port



For TVs with AUX 3.5MM port



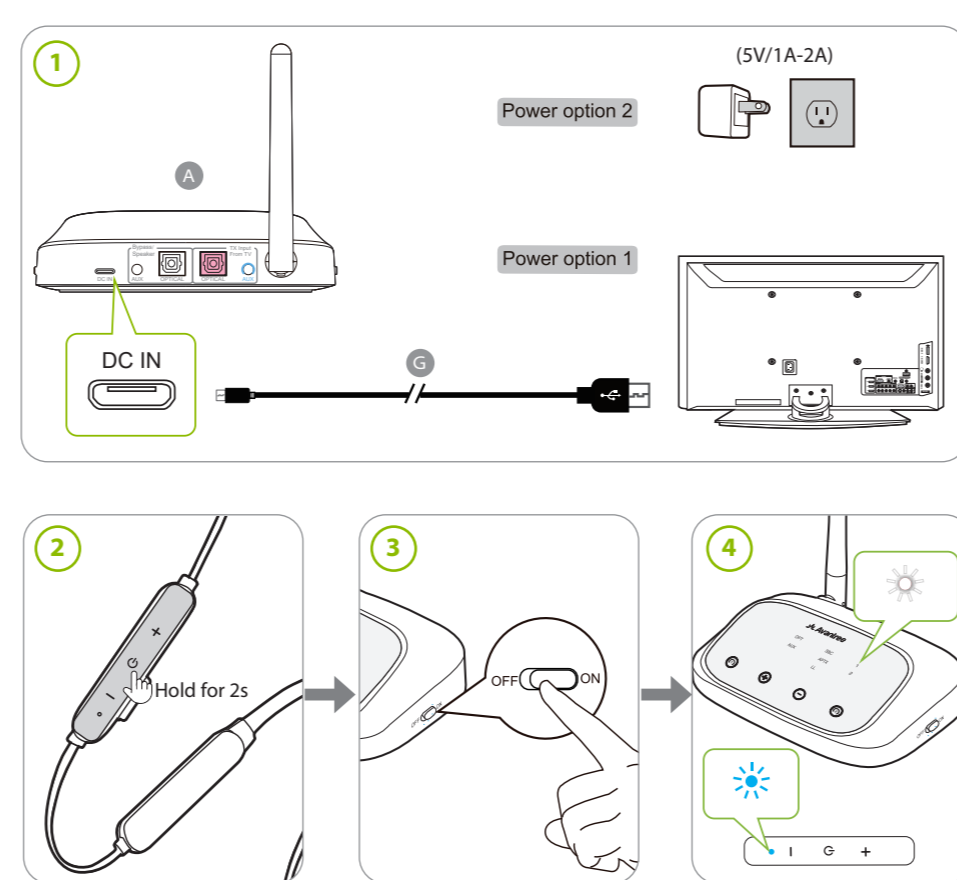
For TVs with RCA AUDIO OUT port



Still need help?
Visit avantree.com/ht5006/tv-connection for more details

2 Connecting Headphones

Kopfhöreranschluss | Connexion casque | Collegamento cuffie | Conexión de auriculares

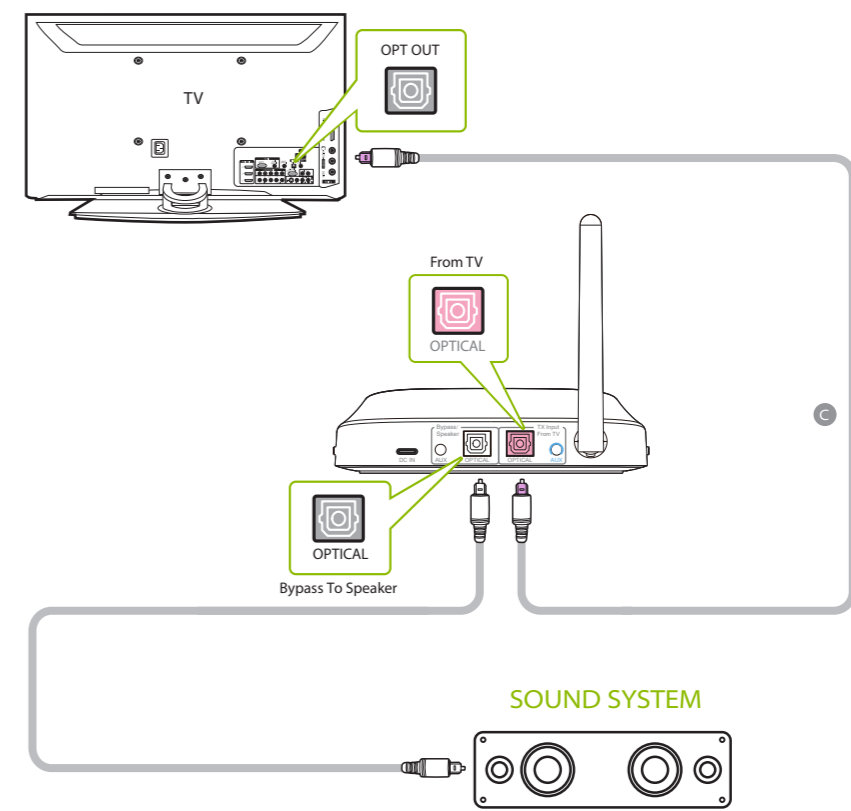


Still need help?
Visit avantree.com/ht5006/headphone-connection for more details.

Use with Soundbar

Verwendung mit Soundbar | Utiliser avec la barre de son | Utilizzare con soundbar | Usar con barra de sonido

TV/AUDIO SOURCE



Still need help?
Visit avantree.com/ht5006/tv-soundbar for more details.

3 Setting Up TV

Einstellung des Fernsehers | Configuration de la télévision | Settaggio della TV | Configuración del televisor

For using TV Optical / Toslink / SPDIF port

1 REMOTE CONTROL
Go to SETTINGS > Audio > Optical / Digital Out

2 REMOTE CONTROL
Digital Audio Format > PCM / Stereo OR Dolby - Off

AUDIO SETTINGS GUIDE



For other TV brands or more information,
visit avantree.com/ht5006/tv-audio-settings for more details.

Online Support

Soporte en línea | Support en ligne | Supporto Online | Soporte en línea



Watch step-by-step video tutorial from avantree.com/ht5006/video before installation.

Troubleshooting & Advanced Functions

EN 1. Avantree TV Headphones Troubleshooting for no sound / not working
2. Netflix / Amazon Prime No Sound in the Headphones

DE 1. Avantree TV-Kopfhörer Fehlerbehebung für keinen Ton / funktioniert nicht
2. Netflix / Amazon Prime Kein Ton in den Kopfhörern

FR 1. Dépannage des écouteurs TV Avantree pour aucun son / ne fonctionne pas
2. Netflix / Amazon Prime Pas de son dans les écouteurs

IT 1. Risoluzione dei problemi delle cuffie TV Avantree per assenza di suono/non funzionanti
2. Netflix / Amazon Prime Nessun suono nelle cuffie

ES 1. Solución de problemas de los auriculares Avantree TV sin sonido/no funciona
2. Netflix/Amazon Prime Sin sonido en los auriculares

Need further assistance?
Visit avantree.com/support/ht5006

