

Duet

User Manual



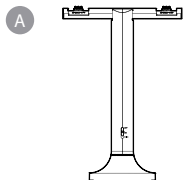
 **Avantree®**

Model No.: WSHT-D6129

Table of Contents

Box Contents	3
Product Overview	4
Button Functions Transmitter.....	5
Button Functions Headphones	5
Charging Headphones & Powering Transmitter	6
Connecting to Your TV	8
Setting Up Your TV	10
Connecting the Headphones	11
Adding More Headphones	12
Listening With a Soundbar	14
Specifications Transmitter	16
Specifications Headphones	16
Troubleshooting	17
Contact Us	86

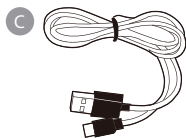
Box Contents



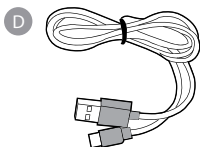
A
Transmitter /
Charging Dock



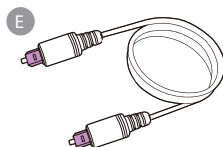
B
2 Headphones



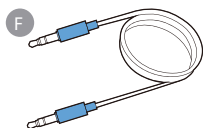
C
Power Cable
for Transmitter



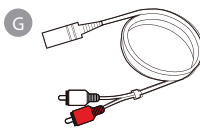
D
USB C Charging
Cable for Headphones



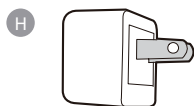
E
Optical Audio
Cable (5ft / 1.5m)



F
AUX 3.5mm
Cable (5ft / 1.5m)



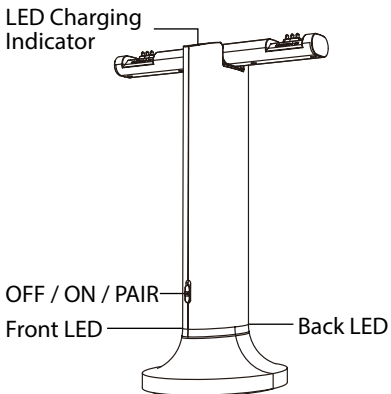
G
AUX 3.5mm to RCA
Adapter (1ft / 35cm)



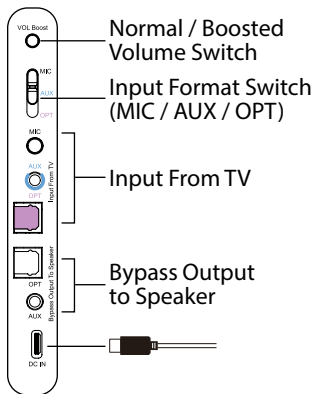
H
USB Adapter

To view and purchase Duet accessories, please visit avantree.com/duet/accessories.

Product Overview



Back View



Mono / Stereo Audio Mode

Balanced / Clear Voice Audio Mode

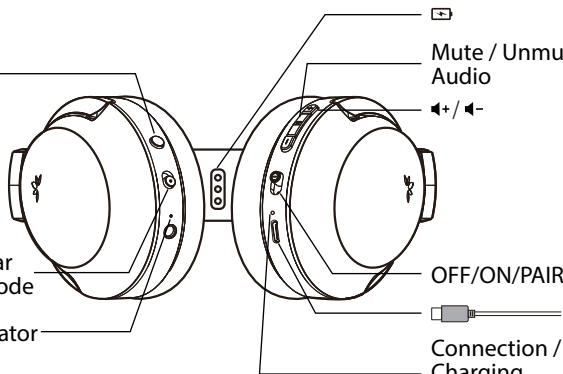
EQ Mode Indicator

Mute / Unmute Audio


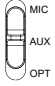

⏸ / 🔊

OFF/ON/PAIR

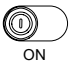




Connection / Charging LED Indicator



Button Functions Transmitter

	<p>Switch to "ON / OFF" position to turn the transmitter on / off</p>
	<p>Hold in "PAIR" position for 5 seconds to enter pairing mode</p>
	<p>Switch to match your desired audio input method</p>
<p>VOL BOOST</p> 	<p>Press once to switch between normal and boosted volume modes</p>

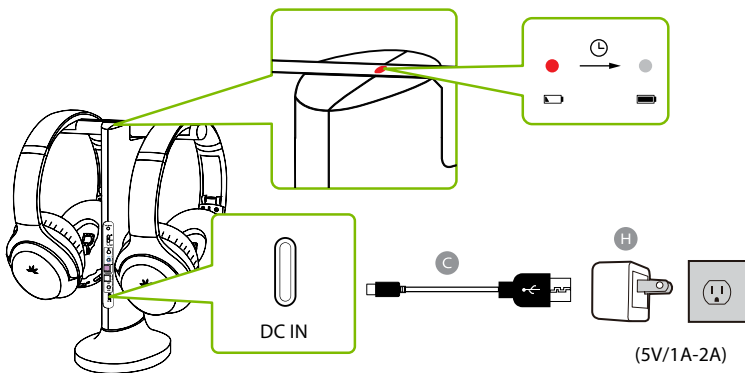
Button Functions Headphones

	<p>Switch to "ON / OFF" position to turn the headphones on / off</p>
	<p>Hold in PAIR position for 5 seconds to enter pairing mode</p>
	<p>Press once to adjust volume</p>
	<p>Press once to mute/unmute the headphones</p>
	<p>Switch between balanced and clear voice audio mode</p>
 <p>Mono / Stereo</p>	<p>Press once to switch between mono / stereo mode</p>

Charging Headphones & Powering Transmitter

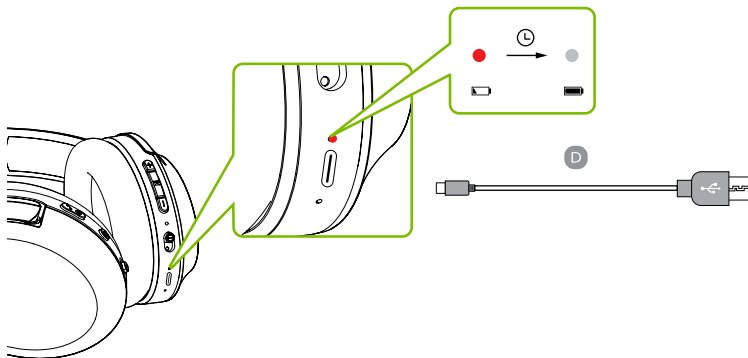
Place the headphones onto the transmitter / charging dock in order to charge. The LED charging indicator on top of the charging dock will turn red while charging, and off once charging is complete.

OPTION 1



You can also charge the headphones through their power ports using the USB C charging cable (Figure D) and a USB adapter. A solid red light indicates that charging is in progress; once the light turns off, your headphones will be at full battery.

OPTION 2



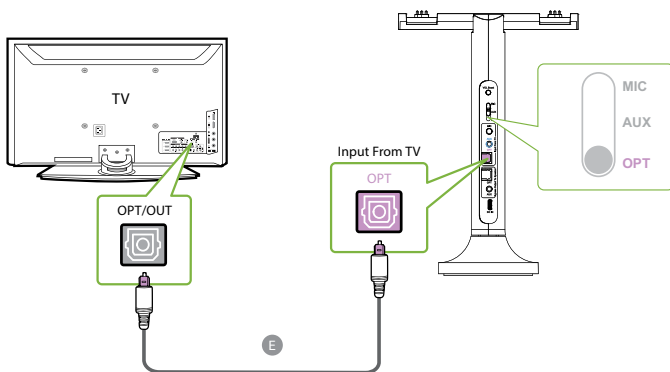
The transmitter does not require charging. However, it must be connected to a power source via the provided power cables (Figure C) in order to function. Plug transmitter into either a nearby wall outlet or TV's USB power port.

Connecting to Your TV

Once the transmitter is connected to power source, you can then connect it to TV's audio output ports. You can choose one of 3 different ways to do this:

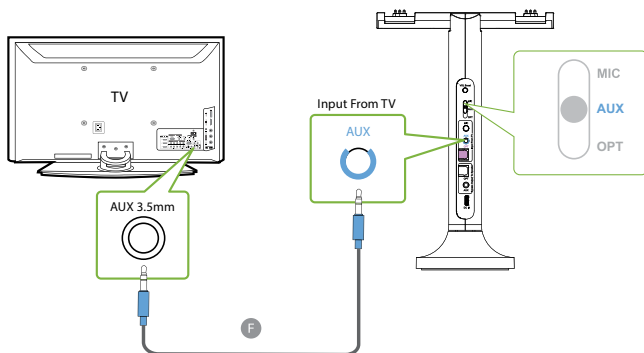
OPTION 1 Optical port (recommended)

plug the provided optical audio cable (Figure E) into the TV's optical OUT or "OPT / OUT" port, then plug the other end into the transmitter's optical port in the "INPUT FROM TV" section. Switch the Audio Input Selector on the transmitter to OPT position.



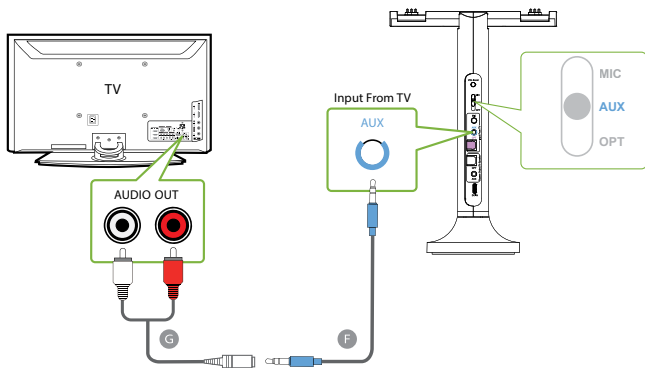
OPTION 2 AUX 3.5mm port

plug the provided AUX 3.5mm audio cable (Figure F) into the TV's AUX 3.5mm output port, then plug the other end into the transmitter's AUX 3.5mm input port in the "INPUT FROM TV" section. Switch the Audio Input Selector on the transmitter to AUX position.



OPTION 3 RCA port

connect the provided RCA adapter (Figure G) to the AUX 3.5mm audio cable (Figure F). Plug the red & white RCA connectors into the TV's "AUDIO OUT" ports, then plug the other end into the transmitter's AUX 3.5mm input port in the "INPUT FROM TV" section. Switch the Audio Input Selector on the transmitter to AUX position.



FOR OPTICAL CONNECTIONS ONLY

Setting Up Your TV

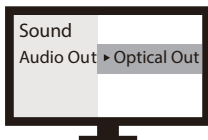
If you connected to your TV via the optical OUT or “OPT / OUT” port, you’ll need to configure your TV settings before you’ll receive audio.

STEP 1

Using your TV’s remote control, press the SETTINGS button and navigate to the AUDIO tab within the settings menu. (Please note that there may be differences in the setting names depending on your brand of TV).

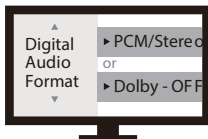
STEP 2

Proceed to AUDIO OUTPUT and select “OPTICAL OUT / EXTERNAL SPEAKER”. Many TVs will do this automatically; skip this step as needed.



STEP 3

Go back to the AUDIO tab in your SETTINGS, then navigate to DIGITAL OUTPUT and turn “PCM / STEREO” ON or “DOLBY” OFF.



If you're having trouble finding these settings, you can scan the QR code correlating to your TV's brand OR visit avantree.com/duet/tv-audio-settings for a more detailed guide.



LG



SONY



SAMSUNG

Connecting the Headphones

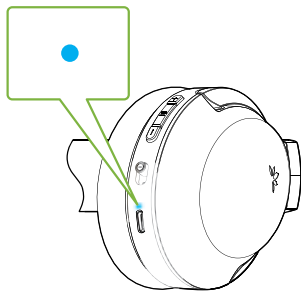
Now that your transmitter is set up, all that's left is connecting the headphones.

STEP 1

First, power everything on.

STEP 2

The transmitter and 2 headphones will auto connect, once connected, the headphones' connection LEDs turn solid blue.

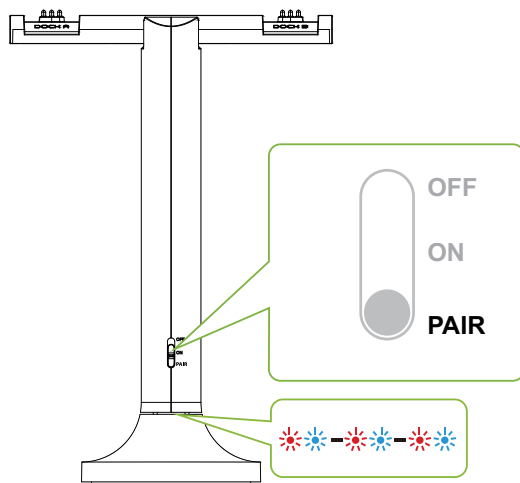


Adding More Headphones

You can add up to 100 Duet-Extra headphones to your setup while maintaining low latency. Please note that **ONLY** Duet-Extra headphones are compatible due to private protocol connections.

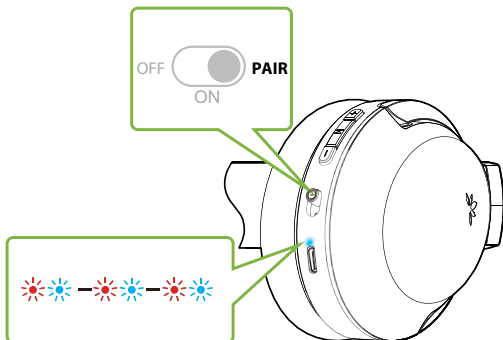
STEP 1

On your transmitter, slide and hold the power switch to the “PAIR” position for 5 seconds. The LED indicator will flash red & blue.



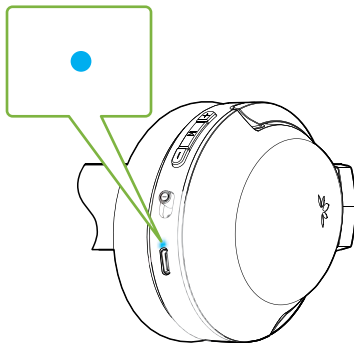
STEP 2

Turn on your pair of Duet-Extra headphones, then slide and hold the power switch to the “PAIR” position until the LED indicator flashes red & blue.



STEP 3

Once connected, the headphones' connection LED indicator will turn solid blue.



Repeat these steps to add up to 100 headphones to your setup.

To purchase Duet-Extra headphones, scan the QR code below.



DUET-EXTRA HEADPHONES

avantree.com/duet-extra-headphones

Listening With a Soundbar

The pass-through function allows you to listen through both the headphones and an external soundbar / stereo AVR simultaneously.

STEP 1

Set up the transmitter and connect it to your TV.

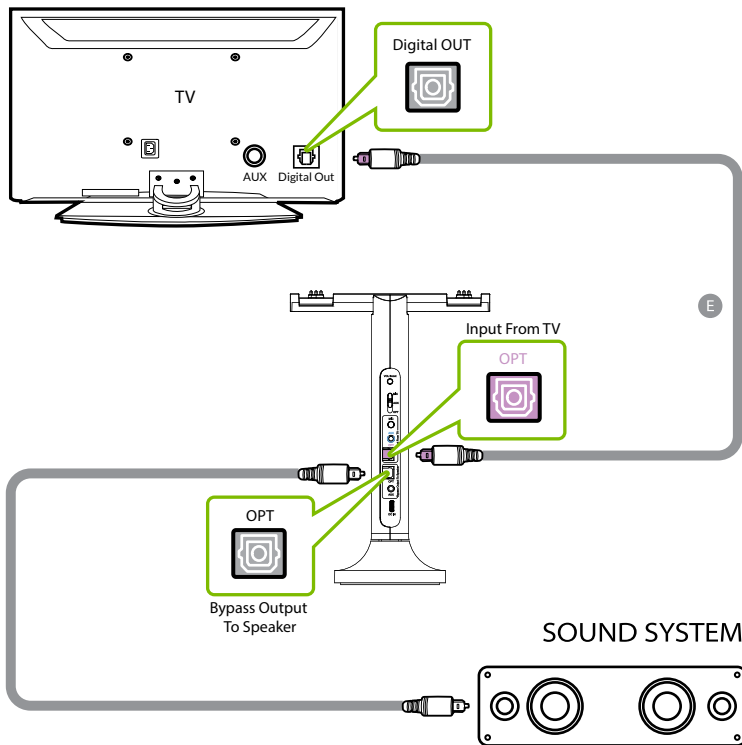
STEP 2

Plug an additional optical, 3.5mm AUX, or RCA audio cable into the correlating audio port in the transmitter's "BYPASS OUTPUT TO SPEAKER" section.

STEP 3

Plug the other end into your external sound system, then you're good to go.

TV/AUDIO SOURCE



Specifications Transmitter

Technology	2.4GHz
Frequency Response (Hz)	20Hz-20KHz
Operating range	Class 1, up to 100ft / 30m
Power supply	5V/1-2A
Power port	USB C
Operating range	Class 1, up to 100ft/30ms

Specifications Headphones

Carrier frequency	2.4GHz
Frequency response (Hz)	20Hz-20KHz
Latency	30ms
Battery life	up to 20 hours
Impedance	32 ohms
Earpads inner diameter & depth	56 x 36mm
Net weight	248g

Troubleshooting

Below are some of the most common questions people have during setup. You can find a full FAQ list at avantree.com/support/duet, or contact support@avantree.com directly for additional assistance.

Why don't I get sound when watching Netflix / Prime Video?

You may need to change your TV's audio settings an additional time when watching Netflix / Prime Video. This can be due to the movie being in Dolby Digital Surround Sound format, or because you're watching with a separate streaming device / cable box. While Netflix / Prime Video is open, go into your TV's audio settings and make sure that the audio output is set to "PCM / STEREO" and that "DOLBY" is turned OFF.

Other Tips:

If your TV's HDMI ARC port is in use, your optical audio output port might not work. Try connecting the transmitter via RCA / AUX or unplugging the HDMI ARC.

It's best to keep your transmitter at least 40 inches (1 m) away from WIFI routers in order to avoid interference.

Contact Us



Support Tickets avantree.com/submit-a-ticket



Support Email support@avantree.com



Support Numbers

US	+1 800 232 2078	9am-6pm PST	Mon-Fri
CA	+1 800 232 2078	9am-6pm PST	Mon-Fri
UK	+44 208 068 2023	9am-6pm GMT	Mon-Sat
DE	+49 322 2109 7297	11am-9pm CET	Mon-Sat
FR	+33 17 634 0312	11am-9pm CET	Mon-Sat
IT	+39 069 4803 330	9am-6pm CET	Mon-Sat
ES	+34 93 1786 261	9am-6pm CET	Mon-Sat
AU	+61 2 8310 9897	11am-7pm AEST	Mon-Fri



FAQ avantree.com/support/duet



Video Guide avantree.com/duet/video



Product Registration See QR code on the product.

Manufacturer:

Avantronics Limited

Luohu District, Shenzhen 518000 China

+ 86 755 8228 5022 support@avantree.com

US Importer:

Avantree Corporation

San Jose, California 95119 USA

+1 800 232 2078 support@avantree.com

UK Importer:

Avantree Limited

Watford, WD180 0HQ UK

+44 20 8068 2023 support@avantree.com



Service in Europe:

Gizmex GmbH,

Sternstr. 67, 40479 Dusseldorf, Germany

+49 322 2109 7297 support@avantree.com



Model No.: WSHT-D6129
Dispose of the packaging and this product in accordance with the latest provisions.
Z-PKQG-D6129-BLK-V6