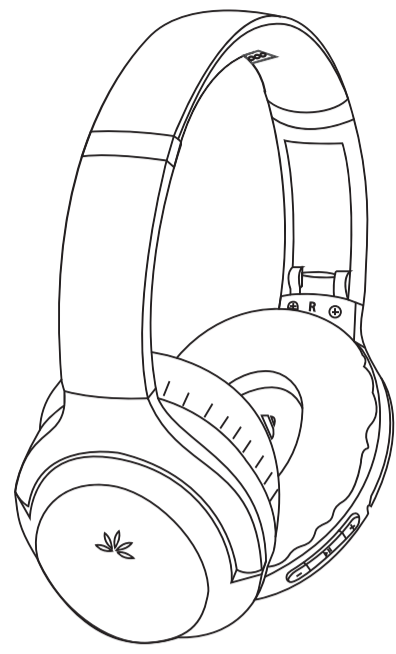


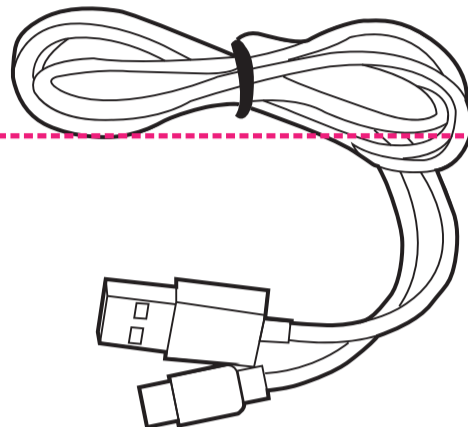


Box Contents

A



B

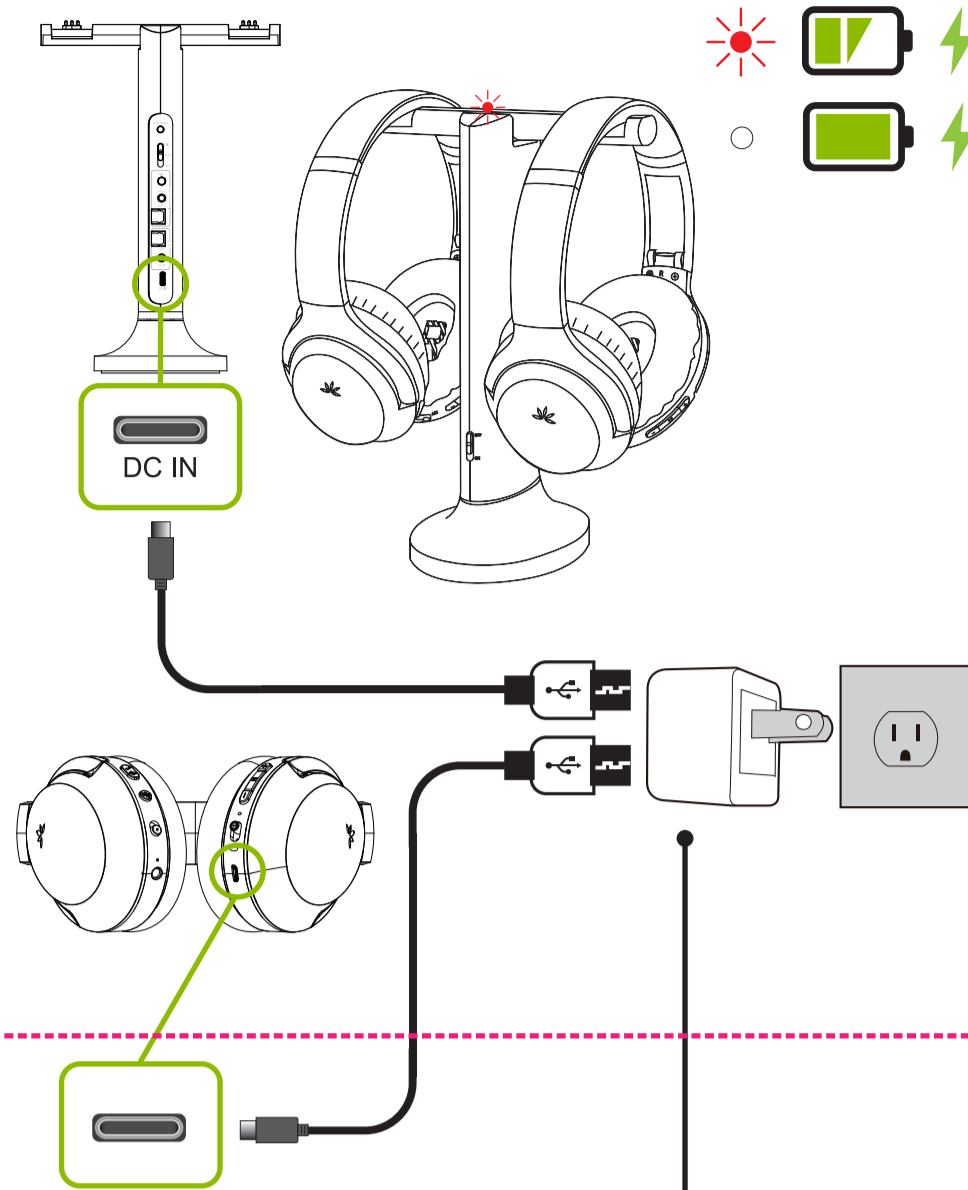


A Wireless Headphones

B USB Type C Charge Cable



Charge



We suggest using a USB wall adapter as a power source, contact us for a free adapter if you do not have one.

Wir empfehlen die Verwendung eines USB-Wandadapters als Stromquelle, kontaktieren Sie uns für einen kostenlosen Adapter, wenn Sie keinen haben.

Nous vous suggérons d'utiliser un adaptateur mural USB comme source d'alimentation, contactez-nous pour un adaptateur gratuit si vous n'en avez pas.

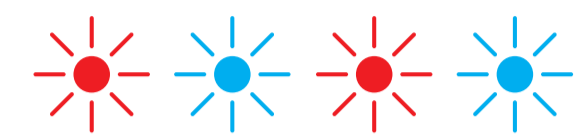
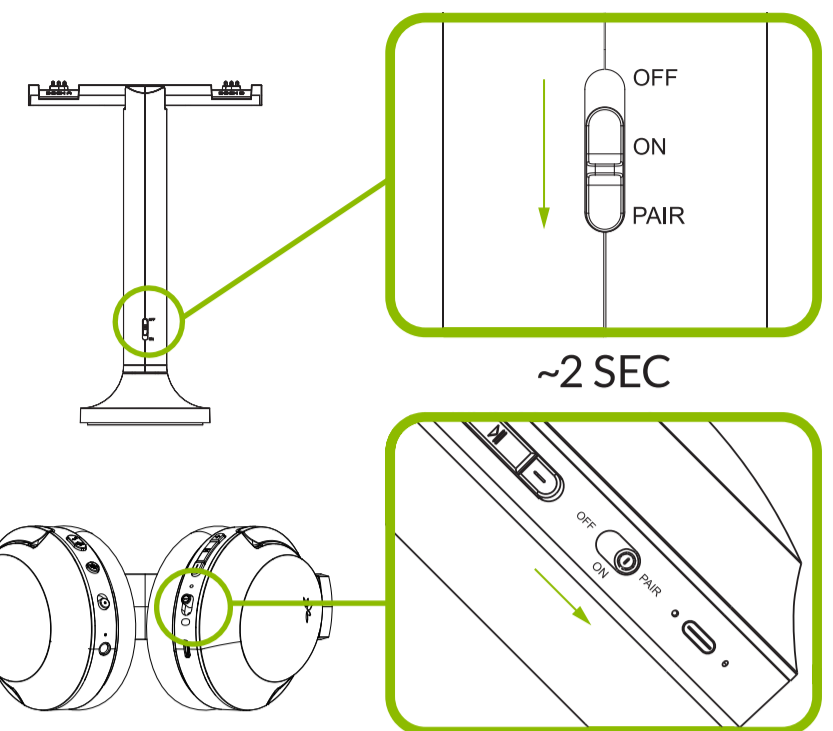
Sugeriamo di utilizzare un adattatore da parete USB come fonte di alimentazione, contattaci per un adattatore gratuito se non ne hai uno.

Sugerimos utilizar un adaptador de pared USB como fuente de alimentación, póngase en contacto con nosotros para obtener un adaptador gratuito si no tiene uno.



Connect

1



Pairing | Paarung | Jumelage | Accoppiamento | Emparejamiento

Hold the power switch on BOTH the headphone and transmitter dock to "PAIR" position for 2 seconds until the LED quickly flashes RED and BLUE alternately.

Halten Sie den Netzschalter SOWOHL am Kopfhörer als auch am Kopfhörer gedrückt Sender für 2 Sekunden in die Position „PAIR“ andocken, bis die LED blinkt abwechselnd schnell ROT und BLAU.

Maintenez l'interrupteur d'alimentation sur le casque ET station d'accueil de l'émetteur en position "PAIR" pendant 2 secondes jusqu'à ce que la LED clignote rapidement en ROUGE et en BLEU alternativement.

Tieni premuto l'interruttore di accensione ENTRAMBE le cuffie e dock del trasmettitore in posizione "PAIR" per 2 secondi fino a quando il LED lampeggia velocemente ROSSO e BLU in modo alternato.

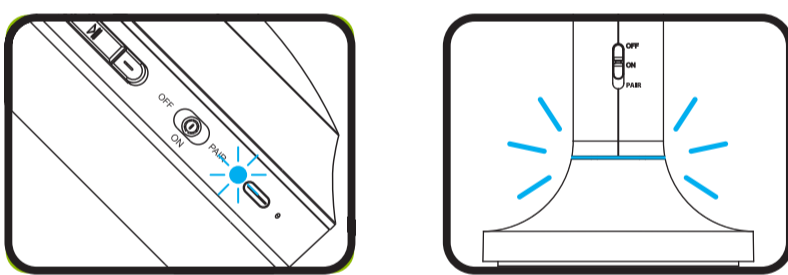
Mantenga pulsado el interruptor de encendido AMBOS auriculares y base del transmisor a la posición "PAIR" durante 2 segundos hasta que el LED parpadea rápidamente en ROJO y AZUL alternativamente.

Z-PKQG-D6129-RX-V0



Connect

2



Connected when Blue light is solid.
Verbunden, wenn blaues Licht durchgehend leuchtet.
Connecté lorsque la lumière bleue est fixe.
Connesso quando la luce blu è fissa.
Conectado cuando la luz azul es sólida.



Accessories & Add-Ons



Audiplex

Duet headphones work with Audiplex



Quartet

Duet headphones work with Quartet



Ear Pads

Replaceable ear pads



USB-C Cable

USB-C charge cable



Single Duet Headphones

Wireless Headphones for Duet

Model # WSHT-D6129-RX



Quick Start Guide
Schnellanleitung | Guide de démarrage rapide
Guida Rapida all'uso | Guía de inicio rápido

3



Repeat steps above for each new headphone.

Wiederholen Sie die obigen Schritte für jeden neuen Kopfhörer.

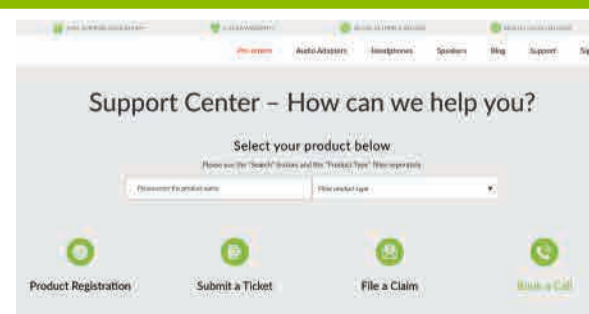
Répétez les étapes ci-dessus pour chaque nouveau casque.

Ripetere i passaggi precedenti per ogni nuova cuffia.

Repita los pasos anteriores para cada auricular nuevo.



ONLINE SUPPORT



1. How to connect Duet headphones to Avantree Audiplex or Quartet?
2. No sound? Not working?
...Find More FAQs and User Tips Online!

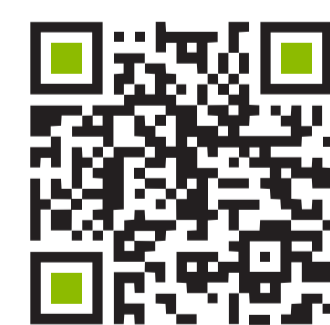
1. Wie verbinde ich Duet-Kopfhörer mit Avantree Audiplex oder Quartet?
2. Keinen Ton? Funktioniert nicht?
...Weitere FAQs und Anwendertipps online finden!

1. Comment connecter un casque Duet à Avantree Audiplex ou Quartet?
2. Pas de son? Ça ne fonctionne pas?
...Trouvez plus de FAQ et de conseils d'utilisation en ligne!

1. Come collegare le cuffie Duet ad Avantree Audiplex o Quartet?
2. Nessun suono? Non funziona?
...Trova altre domande frequenti e suggerimenti per gli utenti online!

1. ¿Cómo conectar los auriculares Duet a Avantree Audiplex o Quartet?
2. ¿Sin sonido? ¿No funciona?
... ¡Encuentre más preguntas frecuentes y consejos para usuarios en línea!

For Advanced Set Up Try our Full User Guide, FAQs, Video Tutorials & More!



avantree.com/support/D6129-RX

www.avantree.com/support

support@avantree.com

USA/CA: 1-800-232-2078
Check your warranty card for your local region

Ask us about getting a free charger!

Dispose of the packaging and this product in accordance with the latest provisions.



Z-PKQG-D6129-RX-V0