

编号: Z-PKQG-SG188-V2
 材质: 80g书纸+四色印刷+正反印刷
 尺寸: 400mmX140mm 折后: 100mmX140mm

Optic Sun

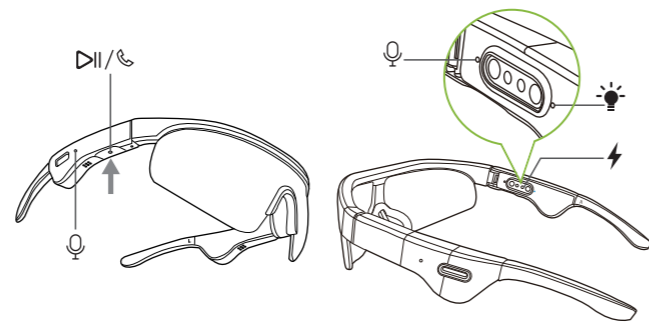
Quick Start Guide | Schnellanleitung | Guide de démarrage rapide
 Guida Rapida all'uso | Guía de inicio rápido



Model No.: BTSG-188

Product Overview

Produktübersicht | Vue d'ensemble du produit | Panoramica Prodotto | Descripción general del producto

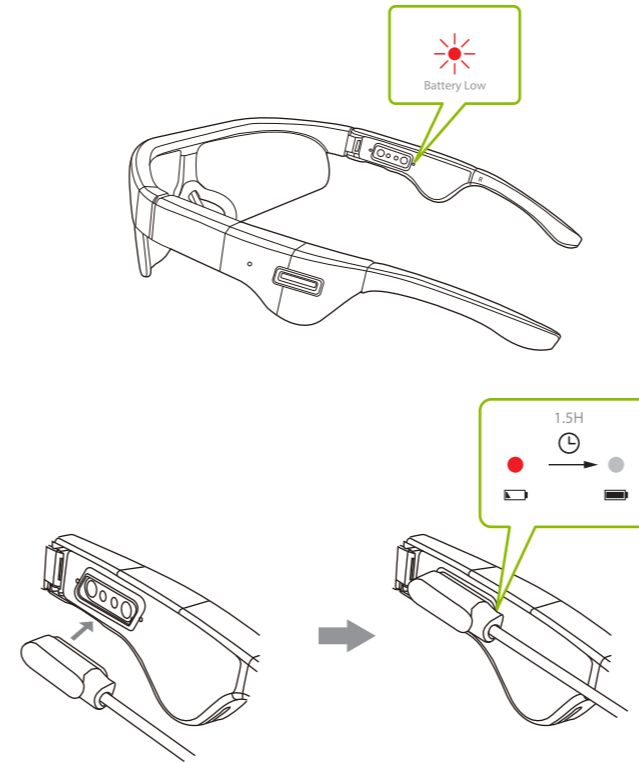


The Optic Sun's force sensor button does not provide haptic feedback - please press firmly until you hear a tone.

- DE Der Kraftsensorknopf der Optic Sun gibt kein haptisches Feedback - bitte drücken Sie fest, bis Sie einen Ton hören.
- FR Le bouton du capteur de force de l'Optic Sun ne fournit pas de retour haptique - veuillez appuyer fermement jusqu'à ce que vous entendiez une tonalité.
- IT Il pulsante del sensore di forza dell'Optic Sun non fornisce feedback tattile: premere con decisione finché non si sente un segnale acustico.
- ES El botón del sensor de fuerza de Optic Sun no proporciona retroalimentación háptica; presione firmemente hasta que escuche un tono.

Charging

Aufladen | Charge | Ricarica | Carga



Input: DC 5V/ 80mA

Contact Us

Kontaktieren Sie uns | Contactez-nous | Contattaci | Contáctenos

Video Guide - avantree.com/optic-sun/video

Ticket Support - avantree.com/submit-a-ticket

Support Email - support@avantree.com

USA / Canada +1800 232 2078 (9am-6pm PST, Mon-Fri)
 UK +44 20 8068 2023 (9am-6pm, GMT, Mon-Sat)
 DE +49 32221097297 (11am-9pm, CET, Mon-Sat)
 FR +33 176340312 (11am-9pm, CET, Mon-Sat)
 IT +39 06 9480 3330 (9am-6pm, CET, Mon-Sat)
 ES +34 931786261 (9am-6pm, CET, Mon-Sat)
 AU +61 2 8310 9897 (11am-7pm, AEST Mon-Fri)

FAQs - avantree.com/support/optic-sun

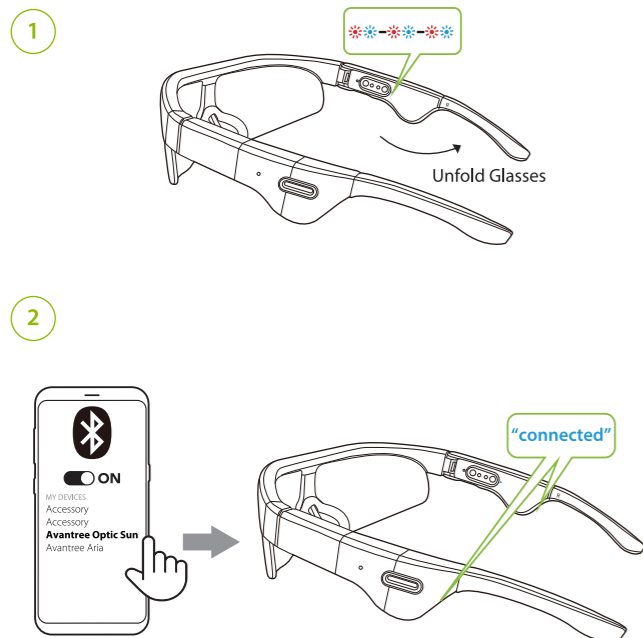
Product Registration - avantree.com/product-registration



Model No: BTSG-188
 Dispose of the packaging and this product in accordance with the latest provisions.
 Z-PKQG-SG188-V2

Phone Connection

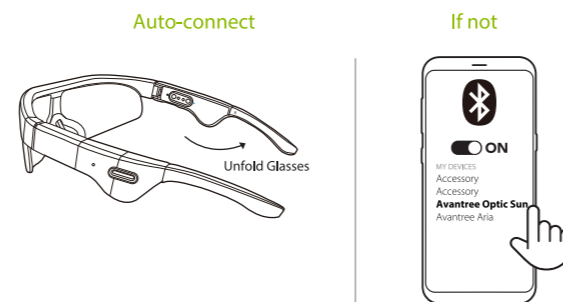
Telefonverbindung | Connexion téléphonique | Connessione telefonica | Conexión telefónica



Visit avantree.com/support/optic-sun/phone-connection for more details

Subsequent Use

Nachträgliche Verwendung | Utilisation ultérieure | Uso successivo | Uso posterior



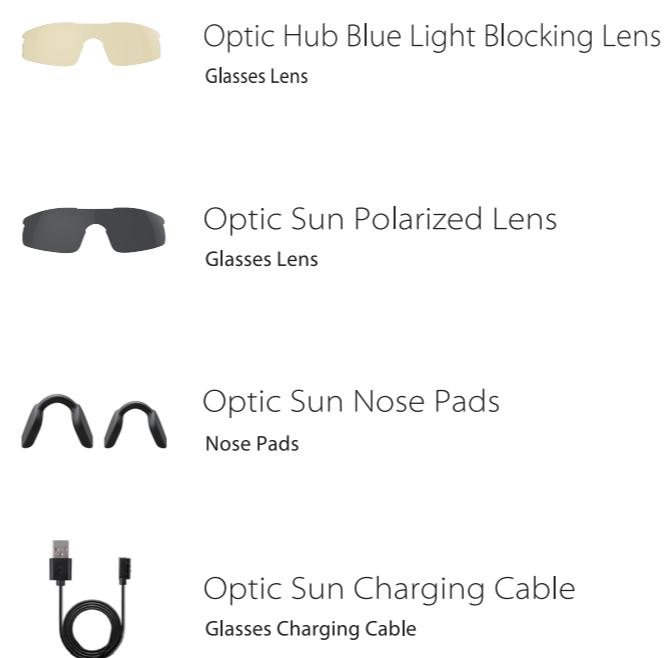
Devices should auto-connect when you turn them back on. If not, select "Avantree Optic Sun" on your phone.

- DE Geräte sollten sich automatisch verbinden, wenn Sie sie wieder einschalten. Wenn nicht, wählen Sie „Avantree Optic Sun“ auf Ihrem Handy.
- FR Les appareils doivent se connecter automatiquement lorsque vous les rallumez. Sinon, sélectionnez "Avantree Optic Sun" sur votre téléphone.
- IT I dispositivi dovrebbero connettersi automaticamente quando li riaccendi. In caso contrario, seleziona "Avantree Optic Sun" sul tuo telefono.
- ES Los dispositivos deberían conectarse automáticamente cuando los vuelva a encender. De lo contrario, seleccione "Avantree Optic Sun" en su teléfono.

Visit avantree.com/support/optic-sun/reconnection for more details

Optional Accessories

Optionales Zubehör | Accessoires optionnels | Accessori opzionali | Accesorios opcionales



Visit avantree.com/optic-sun/accessories for more details

Online Support

Soporte en línea | Support en ligne | Supporto Online | Soporte en línea



Watch step-by-step video tutorial from avantree.com/optic-sun/video before installation.

Troubleshooting & Advanced Functions

- EN 1. How to use the Optic Sun with my smartphone?
2. Optic Sun Function Table & LED Indicators
- DE 1. Wie verwende ich das Optic Sun mit meinem Smartphone?
2. Optic Sun Funktionstabelle & LED-Anzeigen
- FR 1. Comment utiliser le Optic Sun avec mon smartphone?
2. Tableau des fonctions du Optic Sun et indicateurs LED
- IT 1. Come usare l'Optic Sun con il mio Smartphone?
2. Funzioni e Indicatori LED dell'Optic Sun
- ES 1. ¿Cómo usar el Optic Sun con mi teléfono inteligente?
2. Tabla de funciones Optic Sun e indicadores LED

Need further assistance?
 Visit avantree.com/support

