

Avantree Oasis Plus

User Manual



Model No.: BTTC-500P-GRY

EN	User Manual	2
DE	Bedienungsanleitung	24
FR	Guide de démarrage rapide	46
IT	Guida di avvio rapido	68
ES	Guía de inicio rápido	44
JP	取扱説明書	55

Video Guide

EN

Prefer to watch a video tutorial? Scan the QR code below or visit avantree.com/oasis-plus/video for a step-by-step guide.



VIDEO GUIDE

Book an Appointment



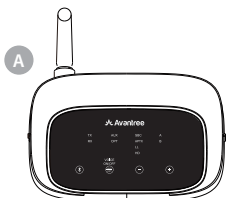
You can also book a 1-on-1 setup appointment with one of our support agents at avantree.com/book-a-call

Table of Contents

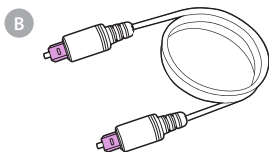
Box Contents	4
Product Introduction	5
Product Overview	5
Button Functions	6
LED Indicators	7
Use for TV Watching (Transmitter Mode)	8
Connecting to TV	8
OPTION 1: Optical port (recommended)	9
OPTION 2: AUX 3.5mm port	10
OPTION 3: RCA port	11
Connecting Your Headphones	12
Setting Up Your TV	14
Adding a Second Pair of Headphones	15
Reconnecting Your Headphones	16
Listening with a Soundbar (bypass function)	17
Use as Wireless Audio Receiver (Receiver Mode)	18
Specifications	20
FAQ	21
Contact Us	23

Box Contents

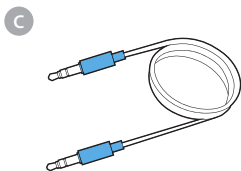
EN



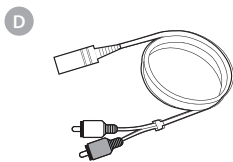
A
Oasis Plus - Bluetooth transmitter



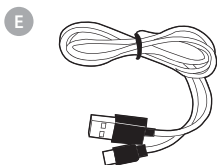
B
Digital Optical Audio Cable



C
AUX 3.5mm Audio Cable



D
AUX 3.5mm to RCA Adapter

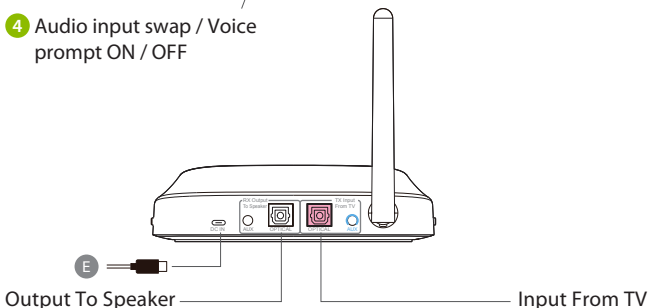
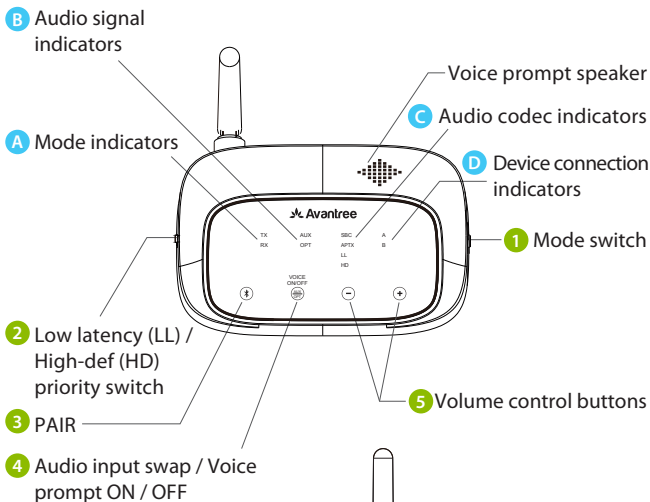


E
Micro USB Power Cable

Product Introduction






Product Overview

EN



Button Functions

EN

No.	Button	Functions
1		Switch to "TX" position to turn the Oasis Plus on & place it into transmitter mode
		Switch to "RX" position to turn the Oasis Plus on & place it into receiver mode
		Switch to "OFF" or "TX" position to bypass audio to speakers
2		Switch to "LL PRIORITY" position to enter low latency mode (only with aptX-LL supported devices)
		Switch to "HD PRIORITY" position to enter high-definition audio mode (only with aptX-HD supported devices)
3		Press & hold for 2 seconds to enter pairing mode
4		Press once to switch between AUX / RCA and OPT audio inputs
		Press & hold for 7 seconds to turn voice prompt ON / OFF
5		Press once to adjust volume
		Press & hold for 3 seconds to replay / skip tracks (RX mode only)
		Press & hold both buttons for 7 seconds to clear pairing history

LED Indicators

No.	Indicator	Status
A	Solid white light by "TX" / "RX"	TX: Transmitter mode; RX: Receiver mode
	Alternate green & white flashes by "TX" / "RX"	Pairing
	Flashing white light by "TX" / "RX"	Reconnecting to last-used device
B	Flashing or solid white light by "OPT" / "AUX"	OPT / AUX audio input selected
	Flashing white light by "OPT" / "AUX"	Invalid audio signal
	Solid white light by "OPT" / "AUX"	Valid audio signal
C	Solid white light by "SBC," "APT X," "LL," or "HD"	Audio streaming in the SBC, aptX, aptX LL, or aptX HD audio codec
D	Solid white light by "A" / "A" & "B"	Successfully connected to your device(s)

TRANSMITTER MODE


EN

Use for TV Watching

Connecting to TV

The Oasis Plus must be connected to a power source via the provided power cable in order to function. Plug the transmitter into either:

1. A TV's USB power port (we recommend this so that they auto power ON / OFF in tandem with your TV), OR
2. A nearby wall outlet - 5V/500mA-2A rated USB adapter (any phone charger should work. Please contact support@avantree.com if you'd like us to send you a free adapter)

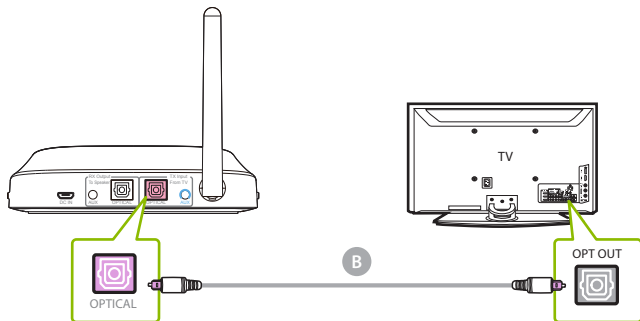
Once the Oasis Plus is connected to its power source, switch  to the "TX" position. You can then connect it to your TV's audio ports. You can choose one of 3 different ways to do this.

OPTION 1 Optical port (recommended)


EN

STEP 1

Plug the provided optical audio cable into the TV's "optical OUT" or "OPT OUT" port, then plug the other end into the transmitter's optical port in the "TX INPUT FROM TV" section.



STEP 2

Check the transmitter's audio signal indicators and ensure that "OPT" is lit up. If it isn't, press the  button once.

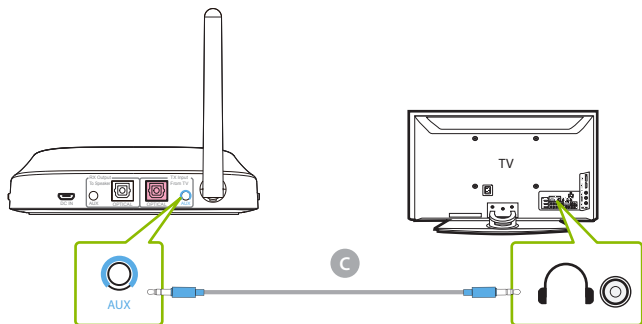



OPTION 2 AUX 3.5mm port

EN

STEP 1

Plug the provided AUX 3.5mm audio cable into the TV's AUX 3.5mm output port, then plug the other end into the transmitter's AUX 3.5mm port in the "TX INPUT FROM TV" section.

**STEP 2**

Check the transmitter's audio signal indicators and ensure that "AUX" is lit up. If it isn't, press the  button once.

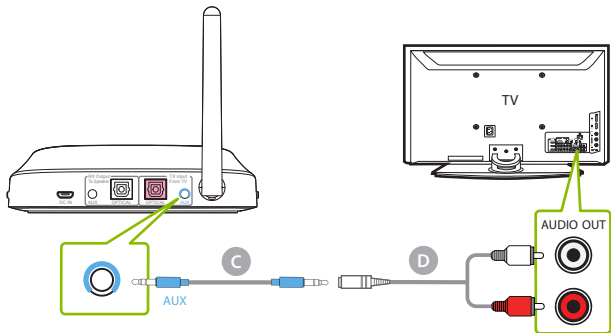


OPTION 3 RCA port


EN

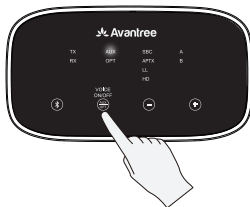
STEP 1

Plug the red & white RCA connectors into the TV's "AUDIO OUT" ports, then use the provided RCA to AUX adapter to plug the other end into the transmitter's AUX 3.5mm port in the "TX INPUT FROM TV" section.



STEP 2

Check the transmitter's audio signal indicators and ensure that "AUX" is lit up. If it isn't, press the  button once.



NOTE: Double check to ensure that optical / RCA cables are plugged into the TV's audio OUT ports and not the AUDIO IN / COMPONENT IN ports.

TRANSMITTER MODE

EN


Connecting Your Headphones

Now that your Oasis Plus is all set up, you can connect your headphones to the transmitter.

STEP 1

First, power everything on.

STEP 2

For first time use, the Oasis Plus will enter PAIRING MODE automatically. For subsequent use, put your Oasis Plus into PAIRING MODE by pressing & holding the  button until the "TX" LED flashes **green** and **white** alternately.

STEP 3

Put your Bluetooth headphones / speakers into PAIRING mode.

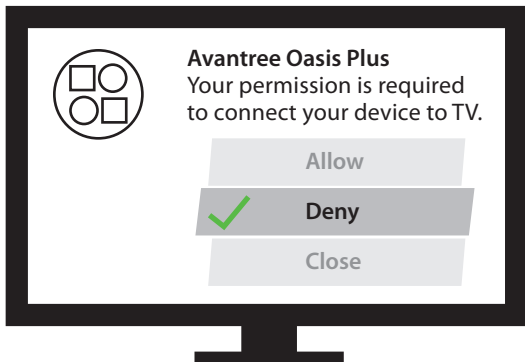
STEP 4

Keep the Oasis Plus & your device close together and wait for 5-10s until they connect. Once connected, the "TX" indicator and the device connection indicator's "A" will turn a solid white.

NOTE 1: Most cases where your device & the transmitter fail to connect happen because the device is not properly placed into PAIRING MODE. Double check that your device is successfully in PAIRING MODE (typically indicated by an LED indicator's alternate red & blue flashes). For more details, please refer to your device's online user manual.

NOTE 2: Some smart TVs will automatically scan for and try to pair with any Bluetooth devices in its vicinity. If your TV prompts you to connect your Bluetooth headphones or the Oasis Plus, please "DENY" the request so that your device can properly pair with the transmitter.

EN



TRANSMITTER MODE

EN **Setting Up Your TV** (FOR OPTICAL CONNECTIONS ONLY)

If you connected to your TV via the optical OUT or “OPT OUT” port, you’ll need to configure your TV settings before you’ll receive audio.

STEP 1

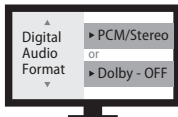
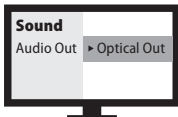
Using your TV’s remote control, press the SETTINGS button and navigate to the AUDIO tab within the settings menu. (Please note that there may be differences in the setting names depending on your brand of TV).

STEP 2

Proceed to AUDIO OUTPUT and select “OPTICAL OUT / DIGITAL OUT”. Many TVs will do this automatically; skip this step as needed.

STEP 3

Set Audio Output format to “PCM / STEREO” ON or “DOLBY” OFF.



If you're having trouble finding these settings, you can scan the QR code correlating to your TV's brand OR visit avantree.com/oasis-plus/tv-audio-settings for a more detailed guide.



LG



SONY



SAMSUNG

TRANSMITTER MODE

EN


Adding a Second Pair of Headphones

You can connect and simultaneously listen through two pairs of headphones if desired. Visit avantree.com/oasis-plus/video if you'd prefer to watch a video guide on this process.

STEP 1

Pair your first pair of headphones to the Oasis Plus by following the steps in the "Connecting Your Headphones" section (Page 12).

STEP 2

Once your first device is successfully connected, put your Oasis Plus into PAIRING MODE once again by pressing & holding the  button until the "TX" LED flashes GREEN and WHITE alternately.

STEP 3

Put your second pair of Bluetooth headphones / speakers into PAIRING mode. Please refer to your headphones' / speaker's user manual for more details if necessary.

STEP 4

Keep the Oasis Plus & your second device close together and wait for 5-10s until they connect. Once connected, the "TX" indicator and the device connection indicator's "B" will turn a solid white.


NOTE: The dual headphones support function works with most headphones but not all. Certain true wireless earbuds in particular do not work well with Bluetooth transmitters' dual headphones mode.

TRANSMITTER MODE

EN

Reconnecting Your Headphones

You typically do NOT need to re-pair your Bluetooth headphones / speakers with the Oasis Plus every time. Once successfully paired, they should automatically reconnect when both devices are turned on (this may take a few seconds).

If your device does not automatically reconnect after 5-10 seconds, you can manually initiate reconnection by pressing the Oasis Plus's  button once and waiting for 5-10 seconds. If this still doesn't work, try initiating reconnection on your audio device as well (typically done by pressing the main Bluetooth PLAY button on your headphones once).

NOTE: If you paired your headphones with a different Bluetooth device, turn Bluetooth OFF on said device(s). AirPods in particular will always prioritize iPhones for automatic pairing, so you'll need to turn your iPhone's Bluetooth OFF when pairing your AirPods with the Oasis Plus.

TRANSMITTER MODE

Listening with a Soundbar

EN

The Oasis Plus's pass-through function allows you to listen through both headphones and an external soundbar / stereo AVR simultaneously.

STEP 1

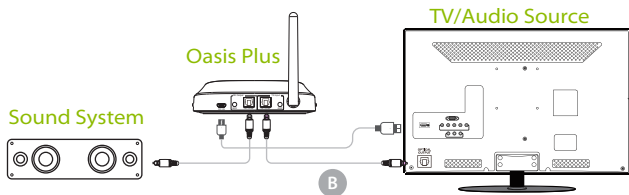
Slide **RX**  to the "TX / BYPASS" or "OFF" position.

STEP 2

Plug an additional optical or 3.5mm AUX cable into the correlating audio port in the transmitter's "RX OUTPUT TO SPEAKER" section.

STEP 3

Plug the other end into your external sound system, then you're good to go.



NOTE: Bypass only works with the same type of input / output, i.e. if you connect to your TV via OPT, you'll need to connect to your speaker via OPT as well.


RECEIVER MODE

EN

Use as Wireless Audio Receiver

The Oasis Plus's receiver (RX) mode allows you to receive audio from a Bluetooth enabled source (such as a phone) and output it through a non Bluetooth compatible speaker or similar.

STEP 1

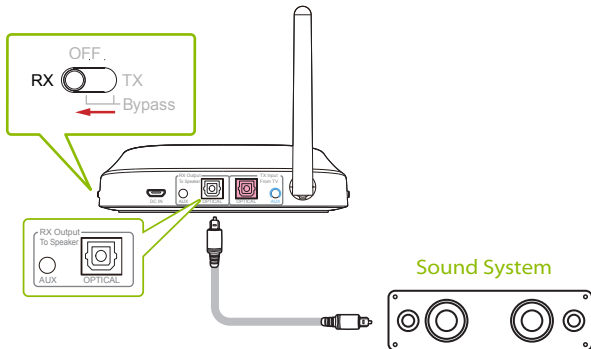
Switch  to the "RX" position.

STEP 2


Using the provided power cable, plug the Oasis Plus into either your speaker's USB port or a wall outlet via 5V/500-mA-2A rated USB adapter (any phone charger should work. Please contact support@avantree.com if you'd like us to send you a free adapter)

STEP 3

Connect to your speaker / soundbar via the included AUX, RCA, or OPT cables. Plug the other end into the transmitter's "RX OUTPUT TO SPEAKER" section.



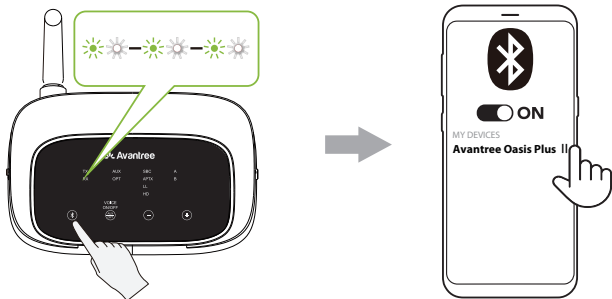
STEP 4

The Oasis Plus should enter PAIRING MODE automatically. If not, press & hold the  button till the "RX" LED flashes GREEN and WHITE alternately.

EN

STEP 5

On your audio source device, turn on Bluetooth and select "Avantree Oasis Plus" from the Bluetooth menu.

**STEP 6**

Keep the Oasis Plus & your device close together and wait for 5-10s. Once connected, the "RX" indicator and the device connection indicator's "A" will turn a solid white.

Specifications

EN

Bluetooth version	v5.0
Supported profiles	A2DP, AVRCP
Audio codecs	aptX-HD, aptX-LL, FastStream, aptX, SBC
Operating range	Up to 164ft / 50m
Input voltage / current	DC5.0V / 500Ma-2A
Supported sampling rate in optical mode	≤48KHz, 16bit
Supported audio format in optical mode	PCM / LPCM
Net weight	90g

FAQ

Below are some of the most common questions people have during setup.

EN

Can I have audio through both my TV speakers and my wireless headphones at the same time?

This completely depends on whether or not your TV supports the ability to output audio to 2 sources simultaneously. You can try a few different methods to test if your TV is capable of this or not -- please refer to avantree.com/oasis-plus/sound for more details.

Why am I getting audio delay?

Both the sender (i.e. the Oasis Plus) and the receiver (i.e. your Bluetooth headphones) must support either aptX Low Latency or FastStream in order to eliminate audio latency. You can check your device's specs to ensure it supports either of these audio codecs. Please note that most true wireless earbuds do not currently support aptX Low Latency or FastStream audio codecs.

Other Tips

If your TV's HDMI ARC port is in use, your optical audio output might not work. Try connecting the transmitter via RCA / AUX or unplugging the HDMI ARC.

Why aren't I getting sound from my headphones?

EN

How do I connect my Oasis Plus to my Samsung / LG smart TV?

.....

For answers to questions like these and for a full FAQ list, you can visit avantree.com/support/oasis-plus, or you can contact us directly for additional assistance.

Contact Us



Support Tickets avantree.com/submit-a-ticket

EN



Support Email support@avantree.com



USA / CA +1800 232 2078 (9am-6pm PST, Mon-Fri)
UK +44 20 8068 2023 (9am-6pm, GMT, Mon-Sat)
DE +49 32221097297 (11am-9pm, CET, Mon-Sat)
FR + 33 176340312 (11am-9pm, CET, Mon-Sat)
IT +39 06 9480 3330 (9am-6pm, CET, Mon-Sat)
ES + 34 931786261 (9am-6pm, CET, Mon-Sat)
AU + 61 2 8310 9897 (11am-7pm, AEST, Mon-Fri)



FAQ avantree.com/support/oasis-plus



Video Guide avantree.com/oasis-plus/video



Product Registration avantree.com/product-registration

Manufacturer: Avantronics Limited

Address: Luohu District, Shenzhen 518000 China

US Importer:

Avantree Corporation

San Jose, California 95119 USA

UK Importer:

Avantree Limited

Watford, WD180 0HQ UK



Servicer in Europe:

Gizmex GmbH,

Sternstr. 67, 40479 Dusseldorf, Germany

Tel: 01 – 408 334 8648 support@avantree.com



Model No:BTTC-500P-GRY
Dispose of the packaging and this product in accordance with the latest provisions.
Z-PKQG-TC500P-V7