

Manufacturer:
Avantronic Limited
Luohu District, Shenzhen 518000 China
+86 755 8228 5022 support@avantree.com

US Importer:
Avantree Corporation
San Jose, California 95119 USA
+1 800 232 2078 support@avantree.com

UK Importer:
Avantree Limited
Watford, WD180 0HQ UK
+44 20 8068 2023 support@avantree.com



Servicer in Europe:
Gizmex GmbH,
Sternstr. 67, 40479 Dusseldorf, Germany
+49 322 2109 7297 support@avantree.com



Model No:BTHT-6190
Dispose of the packaging and this product in accordance with the latest provisions.
Z-PKQG-HT6190-V11

Avantree Opera

QUICK START GUIDE



Model No.: BTHT-6190

Contents

EN	Quick Start Guide	2
DE	Kurzanleitung	18
FR	Guide de démarrage rapide	34
IT	Guida di avvio rapido	50
ES	Guía de inicio rápido	66

Video Guide

EN

Prefer to watch a video tutorial? Scan the QR code below or visit avantree.com/opera/video for a step-by-step guide.



VIDEO GUIDE

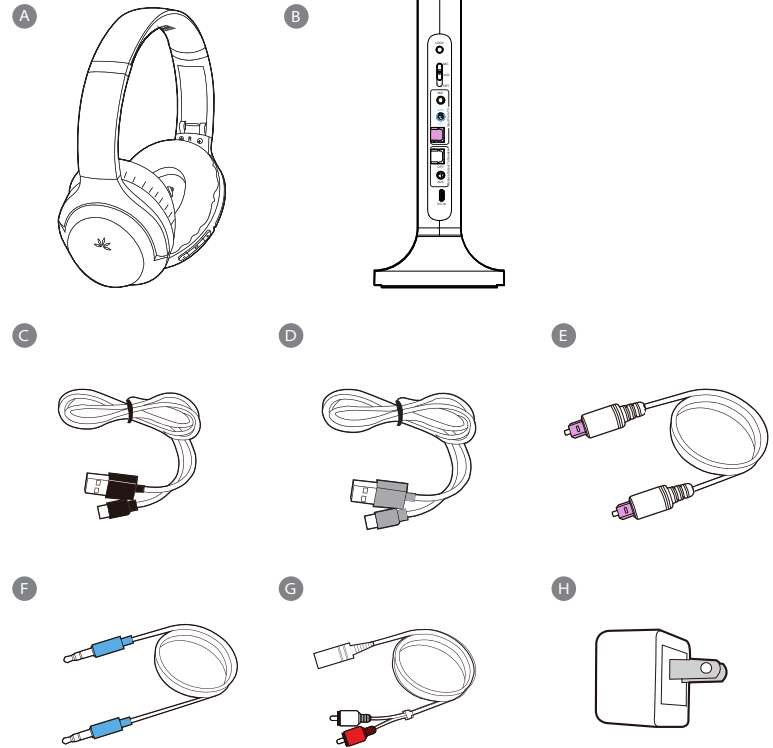
Personal Setup Guides



You can also book a 1-on-1 setup appointment with one of our support agents at avantree.com/book-a-call

Box Contents

EN



A. Headphones

B. Transmitter / Charging Dock

C. Power Cable for Transmitter

D. USB C Charging Cable for Headphones

E. Optical Audio Cable (5ft / 1.5m)

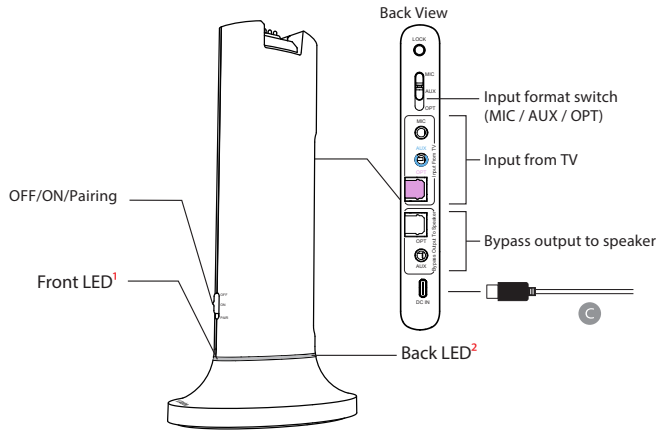
F. AUX 3.5mm Cable (5ft / 1.5m)

G. AUX 3.5mm to RCA Adapter (1ft / 35cm)

H. USB Adapter

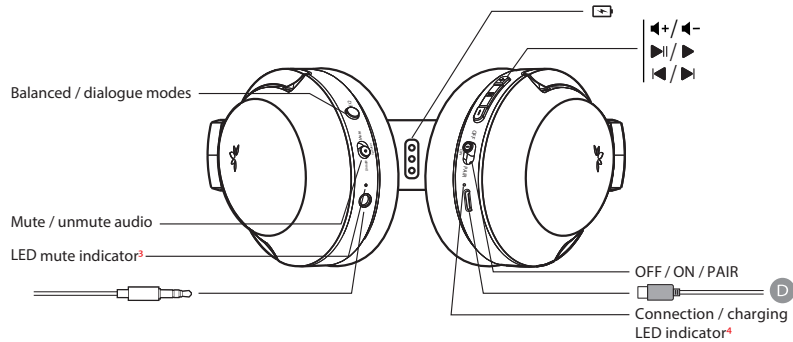
To view and purchase opera accessories, please visit avantree.com/opera/accessories

Product Overview



¹Blue = connected
 Flashing red & blue = pairing mode
 Red = headphones charging
 Off = charging complete

² Solid White=valid audio signal detected
 Flashing=no valid audio signal detected; please adjust TV audio settings



³Orange=headphones muted;
 Off=unmuted

⁴Blue=connected
 Flashing red & blue = pairing mode
 Red=charging
 Off=charging complete

Button Functions

Transmitter

	Switch to "ON / OFF" position to turn the transmitter on / off
	Hold in "PAIR" position for 5 seconds to enter pairing mode
	Switch to the correct audio input you want to use
	Press & hold for 10 seconds to lock your headphones' pairing to the transmitter

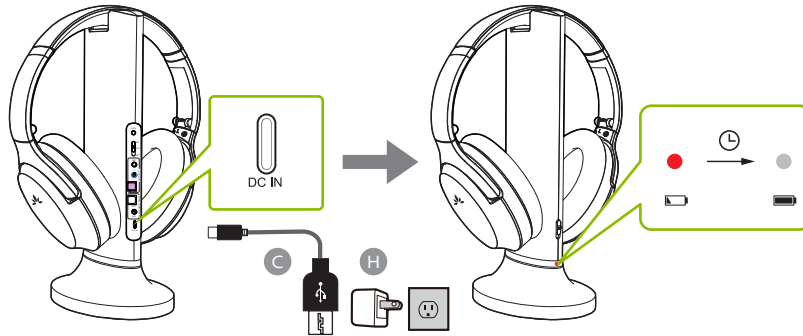
Headphones

	Switch to "ON / OFF" position to turn the headphones on / off
	Hold in "PAIR" position for 5 seconds to enter pairing mode
	Press once to adjust volume
	Press & hold for 2 seconds to skip / replay tracks (when used separately with phone / tablet)
	Press once to play / pause audio (when used separately with phone / tablet)
	If headphones fail to auto-connect to transmitter, press once to activate reconnection
	Press once to switch between clear voice and balanced sound mode
	Switch to mute / unmute audio from the headphones

Charging Headphones & Powering Transmitter

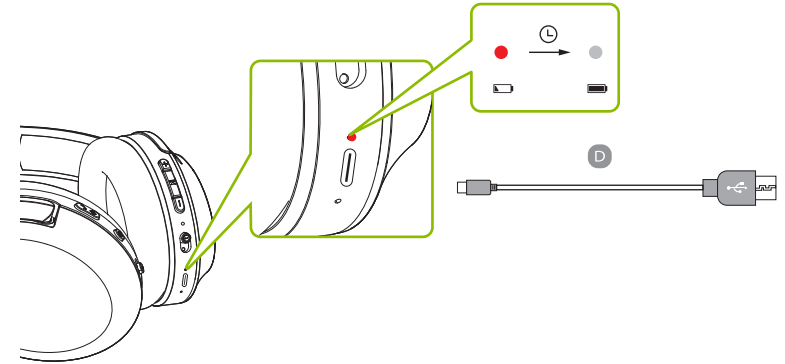
Simply put the headphone back to the charging dock to recharge them. The charging dock front LED turn red while charging, and off once charging complete.

OPTION 1



You can also charge the headphones through their power ports using the USB C charging cable (Figure D) and a USB adapter. A solid red light indicates that charging is in progress; once the light turns off, your headphones will be at full battery.

OPTION 2



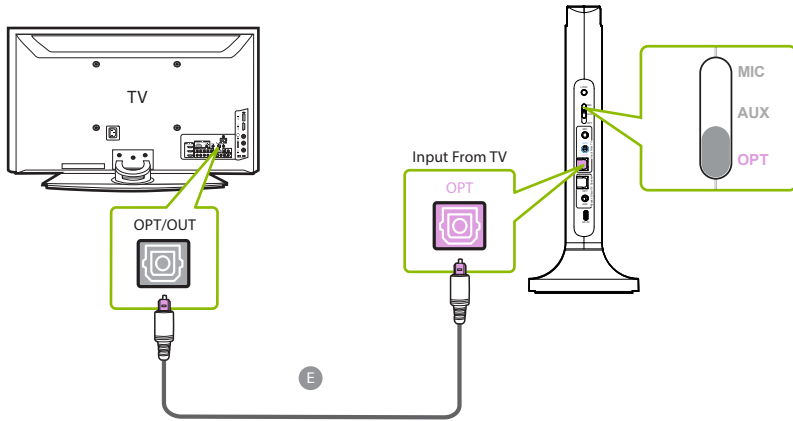
The transmitter does not require charging. However, it must be connected to a power source via the provided power cables (Figure C) in order to function. Plug transmitter into either a nearby wall outlet or TV's USB power port.

Connecting to Your TV

Once the transmitter is connected to power source, you can then connect it to TV's audio output ports. You can choose one of 3 different ways to do this:

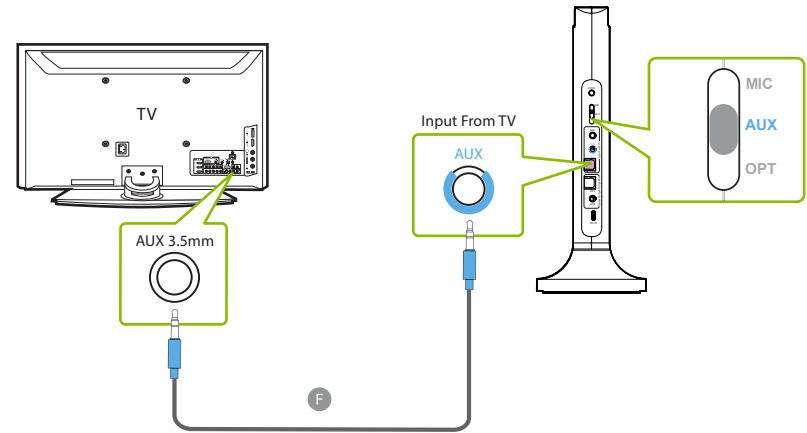
1. Optical port (recommended) - plug the provided optical audio cable (Figure E) into the TV's optical OUT or "OPT / OUT" port, then plug the other end into the transmitter's optical port in the "INPUT FROM TV" section.

On your transmitter, switch the "AUDIO INPUT SELECTOR" to the "OPT" position.



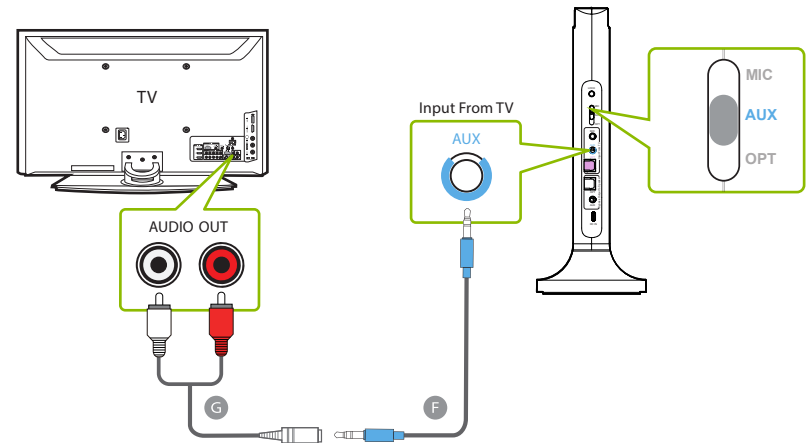
2. AUX 3.5mm port - plug the provided AUX 3.5mm audio cable (Figure F) into the TV's AUX 3.5mm output port, then plug the other end into the transmitter's AUX 3.5mm input port in the "INPUT FROM TV" section.

On your transmitter, switch the "AUDIO INPUT SELECTOR" to the "AUX" position.



3. RCA port - connect the provided RCA adapter (Figure G) to the AUX 3.5mm audio cable (Figure F). Plug the red & white RCA connectors into the TV's "AUDIO OUT" ports, then plug the other end into the transmitter's AUX 3.5mm input port in the "INPUT FROM TV" section.

On your transmitter, switch the "AUDIO INPUT SELECTOR" to the "AUX" position.



FOR OPTICAL CONNECTIONS ONLY

EN

Setting Up Your TV

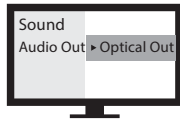
If you connected to your TV via the optical OUT or "OPT / OUT" port, you'll need to configure your TV settings before you'll receive audio.

STEP 1

Using your TV's remote control, press the SETTINGS button and navigate to the AUDIO tab within the settings menu. (Please note that there may be differences in the setting names depending on your brand of TV).

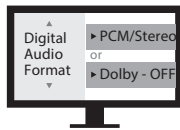
STEP 2

Proceed to AUDIO OUTPUT and select "OPTICAL OUT / EXTERNAL SPEAKER". Many TVs will do this automatically; skip this step as needed.



STEP 3

Go back to the AUDIO tab in your SETTINGS, then navigate to DIGITAL OUTPUT and turn "PCM / STEREO" ON or "DOLBY" OFF.



If you're having trouble finding these settings, you can scan the QR code correlating to your TV's brand OR visit avantree.com/opera/tv-audio-settings for a more detailed guide.



LG



SONY



SAMSUNG

Connecting the Headphones

EN

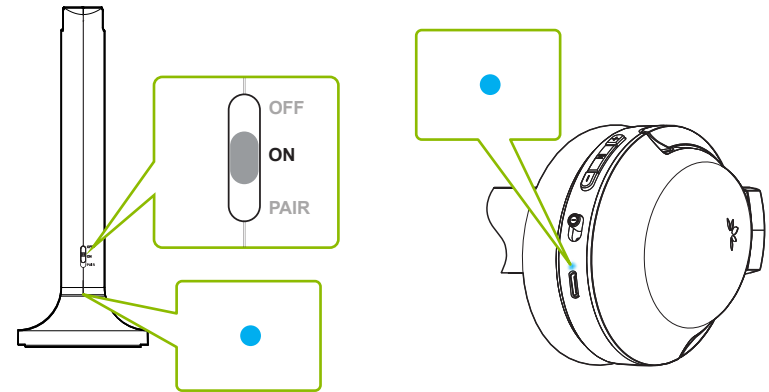
Now that your transmitter is set up, all that's left is connecting the headphones.

STEP 1

First, power everything on.

STEP 2

The transmitter and headphones will auto-connect. Once connected, the headphones' & transmitter's LEDs will turn solid blue.



Adding Another Pair of Headphones

EN

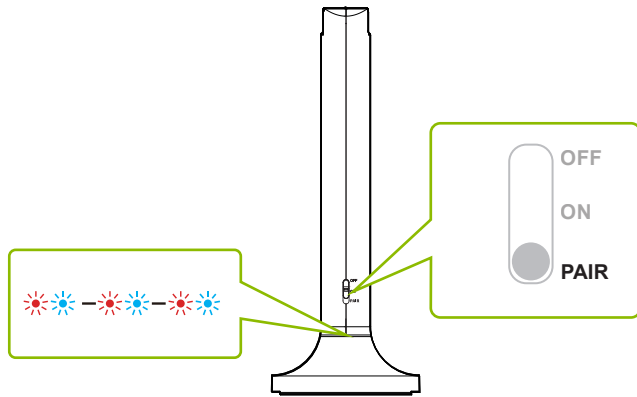
You can add a second pair of Opera headphones (Aria 90c) to your setup while maintaining low latency.

STEP 1

Make sure your original Opera headphones & transmitter have connected.

STEP 2

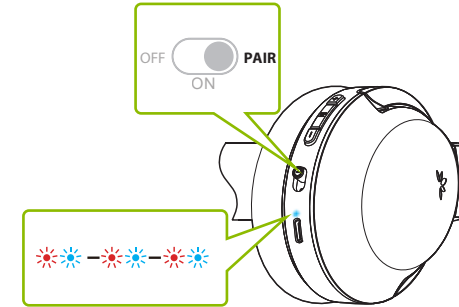
On your transmitter, slide and hold the power switch to the "PAIR" position until the LED indicator flashes red & blue.



STEP 3

Turn on your second pair of Opera headphones, then slide and hold the power switch to the "PAIR" position until the LED indicator flashes red & blue.


EN



STEP 4

Once connected, the headphones' & transmitter's LED indicators will turn solid blue.

RECONNECTING

For subsequent use, please turn the original pair of Opera headphones on first. Once that's connected to the transmitter, you can turn on your second pair of Opera headphones and wait for a few seconds. If it fails to reconnect, press the  button once to activate.

To purchase Aria 90C headphones, scan the QR code below.



avantree.com/aria-90c

Listening with a Soundbar

The pass-through function allows you to listen through both the headphone and an external soundbar / stereo AVR simultaneously.

STEP 1

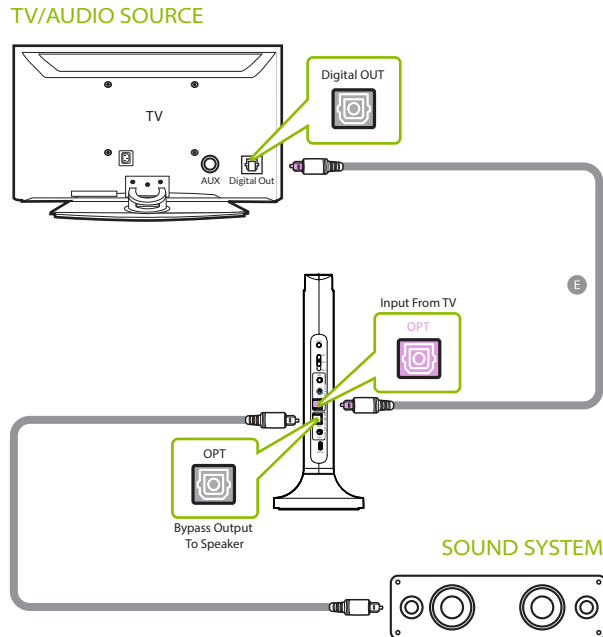
Set up the transmitter and connect it to your TV

STEP 2

Plug an additional optical, 3.5mm AUX, or RCA audio cable into the correlating audio port in the transmitter's "BYPASS OUTPUT TO SPEAKER" section.

STEP 3

Plug the other end into your external sound system, then you're good to go.



Specifications Transmitter

Bluetooth version	V5.0
Bluetooth profiles	HSP v1.2, HFP v1.7, AVRCP v1.0, A2DP v1.3.1
Audio codec support	aptX-LL, aptX, FastStream, SBC
Operating range	Class 1: up to 164ft/50m

Specifications Headphones

Bluetooth version	V5.0
Frequency response (Hz)	20Hz-20KHz
Bluetooth profiles	HSP v1.2, HFP v1.6, A2DP v1.4, AVRCP v1.2
Audio codec support	FastStream, SBC
Battery life	Up to 35 hours
Impedance	32Ω
Sensitivity	96dB
Net weight	245g

Troubleshooting

EN

Below are some of the most common questions people have during setup. You can find a full FAQ list at avantree.com/support/opera, or contact support@avantree.com directly for additional assistance.

Why don't I get sound when watching Netflix / Prime Video?

You may need to change your TV's audio settings an additional time when watching Netflix / Prime Video. This can be due to the movie being in Dolby Digital Surround Sound format, or because you're watching with a separate streaming device / cable box. While Netflix / Prime Video is open, go into your TV's audio settings and make sure that the audio output is set to "PCM / STEREO" and that "DOLBY" is turned OFF.

How do I use the headphones independently with another Bluetooth device?

STEP 1: Turn OFF or unplug the transmitter.

STEP 2: On your headphones, slide and hold the power switch to the "PAIR" position for 5 seconds to enter pairing mode.

STEP 3: Turn on your audio source's Bluetooth and select "Avantree AS90C" from the Bluetooth menu.

I have a Samsung / LG TV. Why are my Avantree headphones failing to reconnect to the transmitter?

Samsung / LG smart TVs tend to pair with any Bluetooth devices it can find, which blocks the Avantree headphones from reconnecting to its transmitter. Try following the steps below in order to fix this:

DENY the Device - If a popup appears on your TV asking you to Allow or Deny / Block the device to connect to the TV, you MUST DENY / BLOCK the device from connecting.

REMOVE the Device - If your device is already paired with the TV, you'll need to remove the device in your TV's settings: SETTINGS > GENERAL > EXTERNAL DEVICE MANAGER > DEVICE CONNECTION MANAGER > DEVICE LIST > EDIT > Select all Avantree devices > DELETE. Please note that the routing may differ based on your TV's brand / model.

Turn OFF the TV - Physically turn your TV OFF or pull the plug (the remote control does NOT turn the TV off; it places it into standby mode which still allows the TV to connect to devices).

Other Tips:


If your TV's HDMI ARC port is in use, your optical audio output port might not work. Try connecting the transmitter via RCA / AUX or unplugging the HDMI ARC.


Contact Us


EN

 **Ticket Support** avantree.com/submit-a-ticket

 **Support Email** support@avantree.com

 **USA / CA** +1800 232 2078 (US Toll Free, 9am-6pm PST, Mon-Fri)
UK +44 20 8068 2023 (9am-6pm, GMT, Mon-Sat)
DE +49 32221097297 (11am-9pm, CET, Mon-Sat)
FR + 33 176340312 (11am-9pm, CET, Mon-Sat)
IT +39 06 9480 3330 (9am-6pm, CET, Mon-Sat)
ES + 34 931786261 (9am-6pm, CET, Mon-Sat)
AU + 61 2 8310 9897 (11am-7pm, Sydney Time, Mon-Fri)

 **Live Chat** avantree.com (18/h weekday)

 **Videos** avantree.com/opera/video

 **Faqs** avantree.com/support/opera